



Active Transportation Advisory Board

Tuesday, December 16, 2025

12:00 Noon

Bentonville Public Library

405 South Main Street

Walmart Foundation Community Room

Agenda

Old Business

1. Approval of November 2025 Meeting Minutes
2. Current Projects Presentation

New Business

1. Sidewalk Infill Priorities
2. Plan Bentonville Presentation
3. 2026 Budget

Other Business

Attachments

ATAB Minutes – June 2025
June Training Slides
2026 Budget
Sidewalk Infill Files



Active Transportation Advisory Board

Meeting Minutes

November 2025

Meeting Date: November 18, 2025
Meeting Called to Order: 12:03 p.m.
Meeting Adjourned: 1:15 p.m.
Meeting Location: Bentonville Public Library, Walmart Community Room
Members: Christina Johnson, Evan Springer, Jason (JP) McCrory, Jocelyn Lampkin, Luke Powers, Shannon Reyenga, Steven George
Members Not Attending: Ashley Calderon, Gayatri Agnew, Monica Diodati, Sadie Kiydelka,
Attending Staff Members: Braedyn McBroom, Dan Weiss, Claire Weise, David Wright, Josh Stacey, Nathan Izard, Tracy Acosta, Tyler Overstreet
Other: Nathan Boone, Toole Design

Old Business

Approval of October Meeting Minutes

Motion to Approve: Christina Johnson
Seconded the Motion: Steven George
Voted in Favor: All
Voted Opposed: None

New Business

ATAB Portal and Emails

Tanner Martin with the City of Bentonville, IT Department, attended the meeting to set up email accounts for each board member. This is a new requirement for citizens holding board positions in the City of Bentonville. Tanner explained and assisted members in setting up their email accounts.

Switzerland Research Trip Presentation

Luke Powers provided a detailed presentation summarizing the City of Bentonville's Active Transportation research trip to Switzerland, including visits to Zurich, Bern, and Freiburg. The purpose of the trip was to investigate best practices in multimodal transportation, speed management, safety planning, transit integration, emergency response coordination, and high-quality cycling infrastructure.

In Zurich, the clear modal hierarchy, with tram-dominant corridors, well-organized intersections, strong pedestrian priority areas, and consistent speed management (typically 30 km/h). Zurich's approach to designing predictable, legible roadways that minimize conflict points and support all users.

In Bern, the team observed a deeply integrated tram system and pedestrian network. Staff described how Bern's stations, plazas, and crossings function together as a unified system, supporting high pedestrian volumes and reliable transit. The board discussed similarities between Bern's compact network and Bentonville's emerging mixed-use areas.

In Freiburg, observations were made on district-level planning, particularly car-light neighborhoods, short internal trip patterns, and strong bike-to-transit connectivity. The board discussed how Freiburg's planning approach reinforces long-term transportation goals and supports high cycling mode share.

Throughout the trip, it was noted the striking consistency in design philosophy, intersection treatments, speed control, and user expectation, regardless of city size or density.

Justin Allen Presentation

Professional cyclist Paige Onweller, spoke about her recent severe cycling injury. She went into detail about the accident on the road and continued onto the gravel road. She also expressed concern about driver accountability and the legal consequences of such incidents. Justin Allen spoke to the board regarding his daughter's own experiences with roadway conflicts and highlighted the vulnerability of cyclists on streets not designed with consistent protection or predictable driver behavior. Both of their testimonies reaffirmed the importance of clear, safe, low-speed street environments. Everyone thanked the speakers for their courage and emphasized the importance of integrating real-world crash outcomes into long-term planning.

Motion 1 – Evaluation

The Board recommends that the Traffic Safety & Signage Board analyze the intersection and roadway segment for safety issues. This evaluation will focus on collision risk, traffic behavior and opportunities for near-term and long-term safety improvements. The required agenda request form, including four resident signatures, will be completed and submitted with supporting meeting minutes.

Motion 2 – Board's Recommended Actions

The Board includes its own recommended improvements:

1. Evaluate the intersection
2. Repaint striping immediately, as quick fix
3. Recommend stop signs and a lower speed limit as long-term solutions
4. Consider painted speed-calming treatments
5. Consider bike lanes / soft-speed design
6. Reevaluate speeds after four months

(These are all bundled under the “board recommendations,” not separate motions.)

Approval of Recommendation to the Transportation Department

Motion to Approve: Jason (JP) McCrory
Seconded the Motion: Jocelyn Lampkin
Voted in Favor: All
Voted Opposed: None

Other Business

Project Development and Implementation

Bentonville Active Transportation Advisory Board

June 17, 2025
Bentonville, AR



Orientation Overview

- Session 1: Project Development and Implementation
 - The public infrastructure development process
 - Stages of planning, design, and construction
 - Role of successful active transportation advisory bodies



Orientation Overview

- Session 2: Design Guidance and Best Practices
 - Federal and state design guidelines
 - Similarities, differences, and interaction between various guides

- Session 3: Regional and Local Plans and Design Guidance
 - Regional and Local Vision Zero Plans
 - NWA Complete Streets Design Guide
 - City of Bentonville plans and standards

Public Infrastructure Development Process

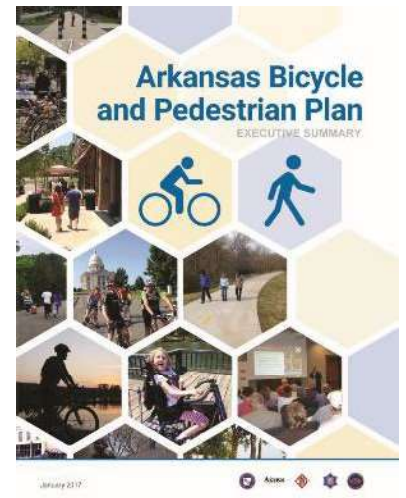
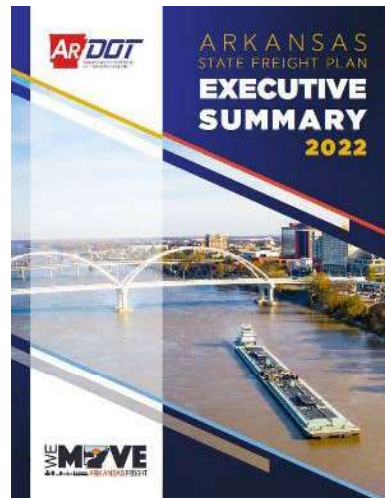
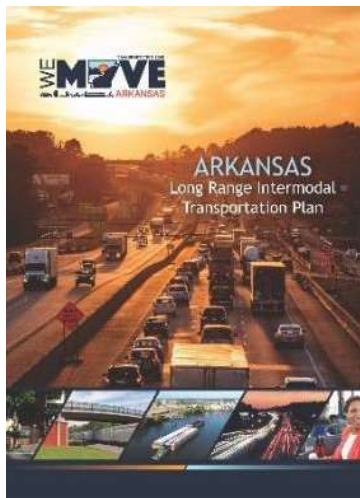
Public Infrastructure Development Process

- Planning
 - State, regional, and local planning
 - Plans, policies, and regulations
- Programming and Funding
 - Federal and state programs
 - Direct allocations to region or city
 - Local funding
 - Private development
 - Philanthropic investment



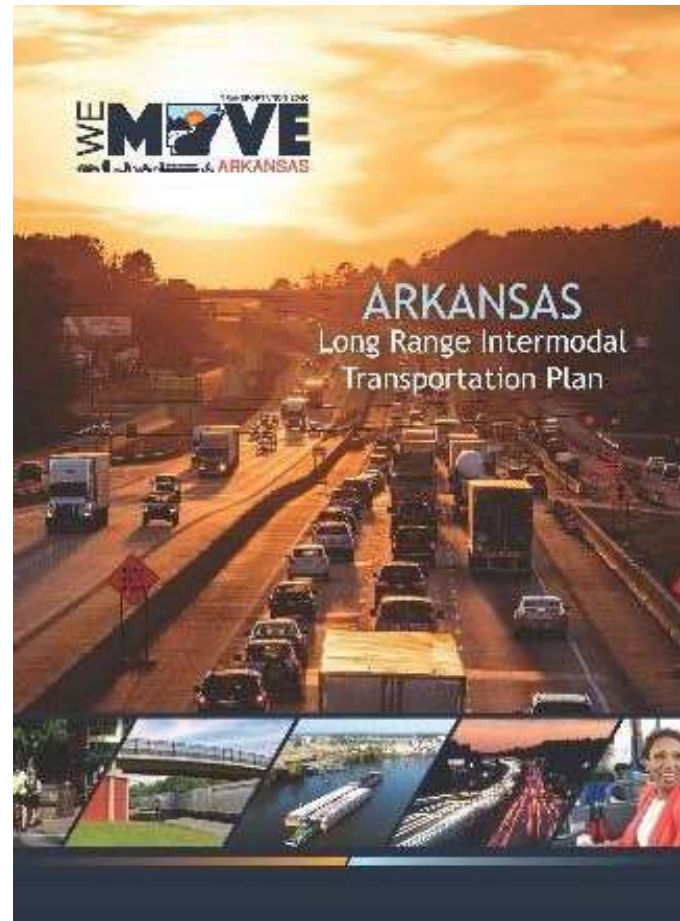
Public Infrastructure Development Process

- Statewide Transportation Planning
 - Arkansas Department of Transportation (ARDOT)
 - Arkansas Highway Commission



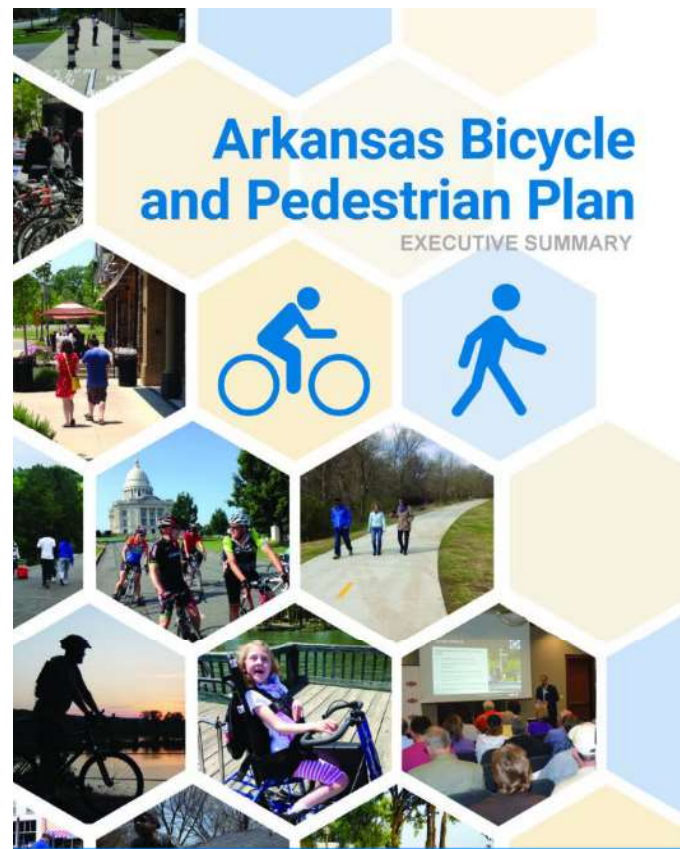
Statewide Transportation Planning

- We Move Arkansas
 - Goals and objectives
 - Transportation trends and the economy
 - Existing multimodal system condition
 - Multimodal needs through 2040
 - Revenue and funding forecast through 2040
 - Performance measures
 - Analysis of alternative future scenarios
 - Policy recommendations and implementation strategies



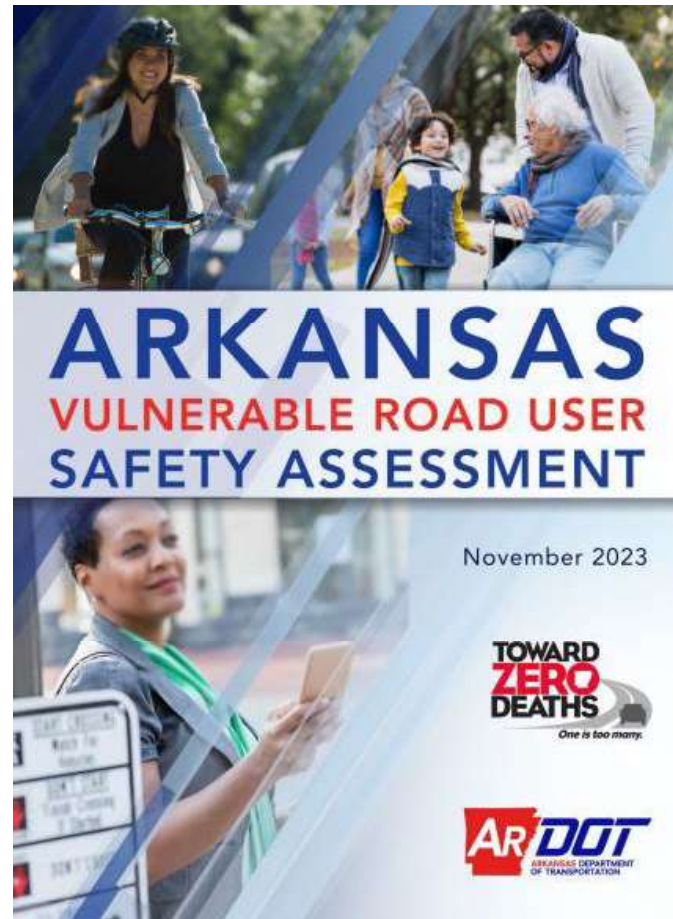
Statewide Transportation Planning

- AR Bike Ped Plan
 - Arkansas Department of Transportation (ARDOT)
 - Arkansas Highway Commission
 - Statewide Transportation Plan
 - Statewide Bicycle and Pedestrian Plan
 - Vulnerable Road User Assessment
 - Bicycle and Pedestrian Accommodation Policy / Multimodal Access Policy



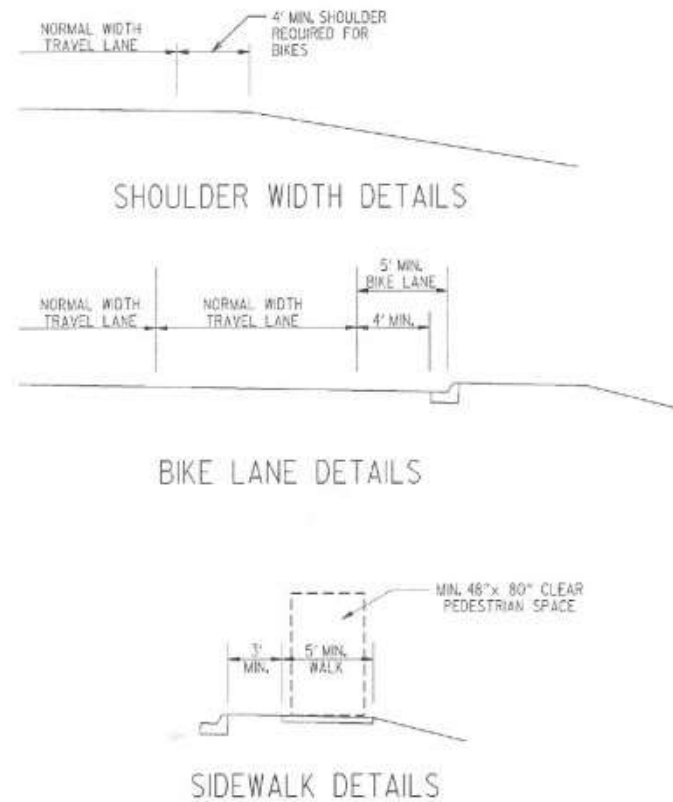
Statewide Transportation Planning

- AR VRU Safety Assessment
 - Review of statewide safety documents, MPO plans, and other pertinent plans
 - Fatal and serious injury crash analysis to better understand VRU safety needs
 - Identification of the top 10 state-owned and top 10 locally-owned high-risk VRU corridors
 - SHSP Steering Committee, meetings with MPOs and local agencies.
 - Strategies and actions to reduce the risk of VRU fatalities and serious injuries



Statewide Transportation Planning

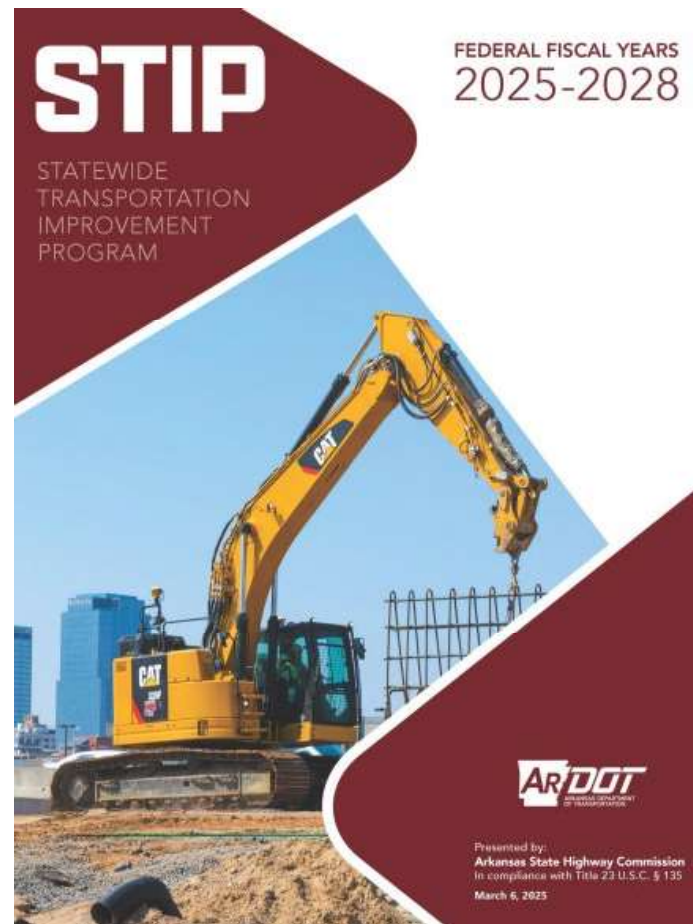
- AR Bike Ped Accommodation Policy
 - Facilities identified in local plans – local coordination may be needed
 - Bicycle lane in accordance with AASHTO Bike Guide
 - Shared use paths considered by local request
 - Requires local funding for costs beyond minimum standards



Statewide Transportation Planning

- Statewide Transportation Improvement Program (STIP)
 - Capital improvement program at the state level for:
 - State highway projects
 - Local projects in metros >200k population
 - Transit projects
 - Maintenance programs

TOOLE
DESIGN



STIP

FEDERAL FISCAL YEARS
2025-2028

STATEWIDE
TRANSPORTATION
IMPROVEMENT
PROGRAM

AR/DOT
ARKANSAS
DEPARTMENT
OF TRANSPORTATION

Presented by:
Arkansas State Highway Commission
In compliance with Title 23 U.S.C. § 135
March 6, 2025

Public Infrastructure Development Process

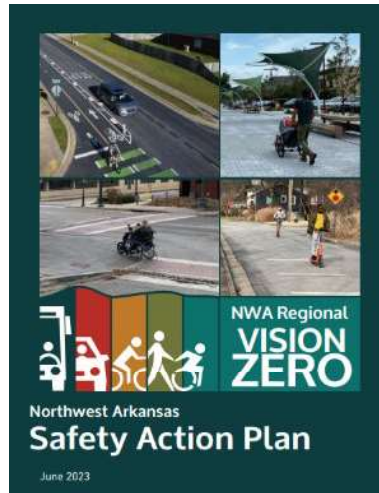
- Regional Transportation Planning
 - NWA Regional Planning Commission (NWARPC)
 - Cities, counties, and transportation agencies



NORTHWEST ARKANSAS REGIONAL PLANNING COMMISSION
2045 METROPOLITAN TRANSPORTATION PLAN

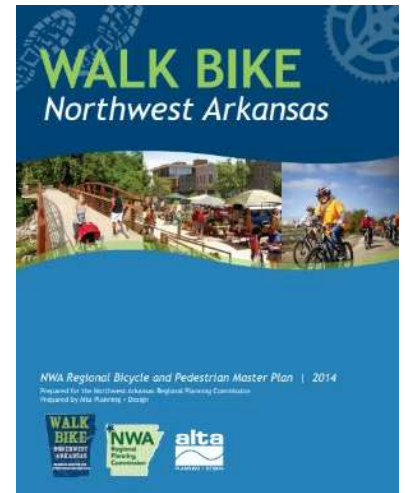
Prepared by the Northwest Arkansas Regional Planning Commission in cooperation with the Arkansas Department of Transportation, Missouri Department of Transportation, Federal Highway Administration and Florida Transit Administration.

Adopted March 24, 2011



Northwest Arkansas
Safety Action Plan

June 2023



NWA Regional Bicycle and Pedestrian Master Plan | 2014
Prepared for the Northwest Arkansas Regional Planning Commission
Prepared by Max Hurling + Design

Regional Transportation Planning

- 2045 MTP – Forward 2050
 - Metropolitan Transportation Plan for NWA
 - Goals and objectives
 - Transportation trends and the economy
 - Existing multimodal system condition
 - Multimodal needs through 2040
 - Revenue and funding forecast through 2040
 - Performance measures
 - Specific regional projects



NORTHWEST ARKANSAS REGIONAL PLANNING COMMISSION 2045 METROPOLITAN TRANSPORTATION PLAN

Prepared by the Northwest Arkansas Regional Planning Commission in cooperation with the Arkansas Department of Transportation, Missouri Department of Transportation, Federal Highway Administration and Federal Transit Administration

Adopted March 24, 2021

Metropolitan Transportation Plan
2045
NWARPC

Regional Transportation Planning

- 2045 MTP – Forward 2050
 - Increasing transportation choice
 - Mode shift away from driving alone
 - Deemphasizing congestion
 - Increased focus on transit
 - Expected completion date of 2025

[Transit Alternatives Survey](#)



TOOLE
DESIGN

FORWARD



Connecting Northwest Arkansas through Transportation Choice

NWA Regional Planning Commission Traffic is Growing, and People Want More Transportation Choices

Traffic Congestion Still a Major Concern, but Less Than in Past
88% of respondents recognize increased traffic congestion between 2019 and 2024, compared to 94% in 2019 reporting an increase from the previous five years.

The Need for Transportation Choice
Public interest in alternatives like public transit, biking, and walking is growing. While maintaining and building new streets and highways received the highest funding priority in 2024, bus services and bikewalking facilities received higher funding priority compared to previous years, reflecting stronger support for diverse transportation options.

Public Transit Support on the Rise
Better routes, frequent service, and real-time updates are key to increasing usage.
71% believe it is "very important" for local government to fund and support public transportation.
+19% since 2019

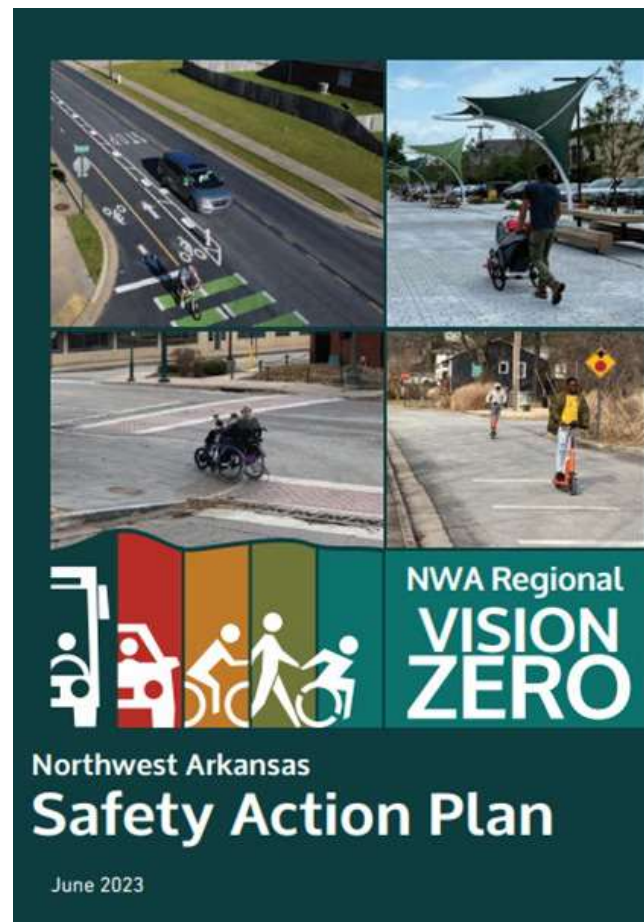
Transportation Challenges
Residents want safer, more accessible infrastructure that addresses congestion issues and the lack of non-auto infrastructure.
Many of the issues identified in 2019 remain prevalent in 2024:
- Congestion issues due to traffic, pedestrian congestion, and lanes
- Lack of public transportation
- Lack of public transit
+17% since 2019

Key Takeaways
1. **Community Support for Transportation Choice:** There is growing public support for original investments in diverse transportation options to accommodate the needs of a rapidly expanding community.
2. **Balanced Approach:** A balanced strategy that serves all types of roadway users—commuters, freight, visitors, and residents—is crucial for responsible growth and accessibility and maintaining the region's quality of life, emphasizing the need to align transportation decisions with other regional priorities.

Source: Northwest Arkansas Regional Planning Commission, Northwest Arkansas Transportation Survey 2024. [View the full survey results.](#)

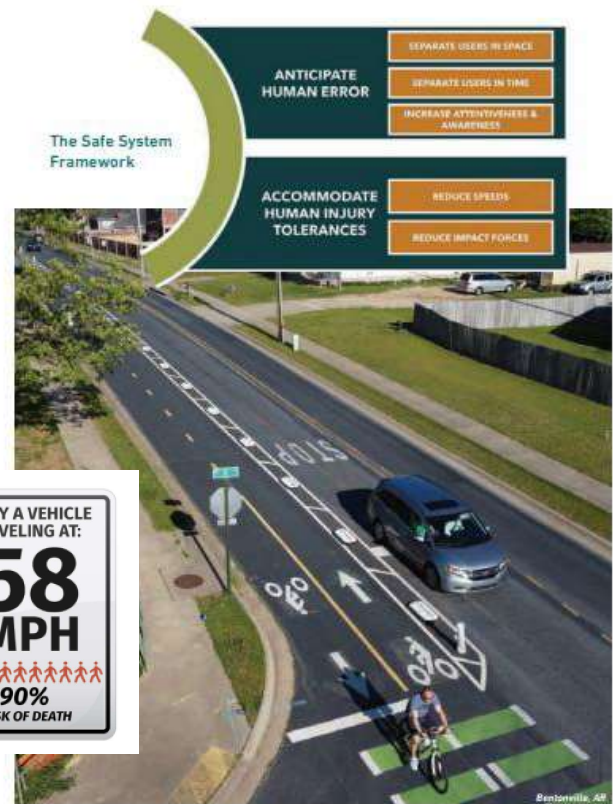
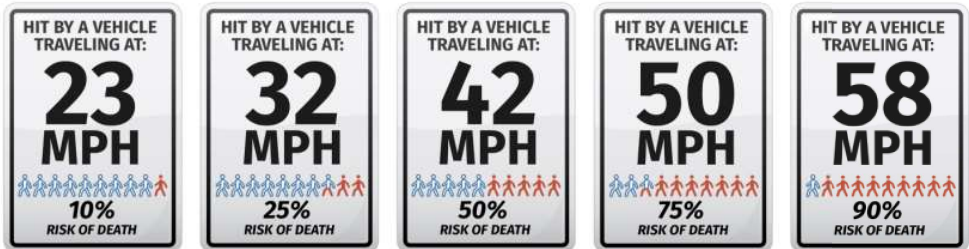
Regional Transportation Planning

- NWA Regional Vision Zero SAP
 - Plan to eliminate fatal and serious injury crashes in Northwest Arkansas by 2038 by:
 - Promoting a culture that prioritizes people's safety
 - Reducing conflicts between roadway users
 - Establishing policies, practices, and programs that focus on safety at all levels
 - Slowing vehicle speeds



Regional Transportation Planning

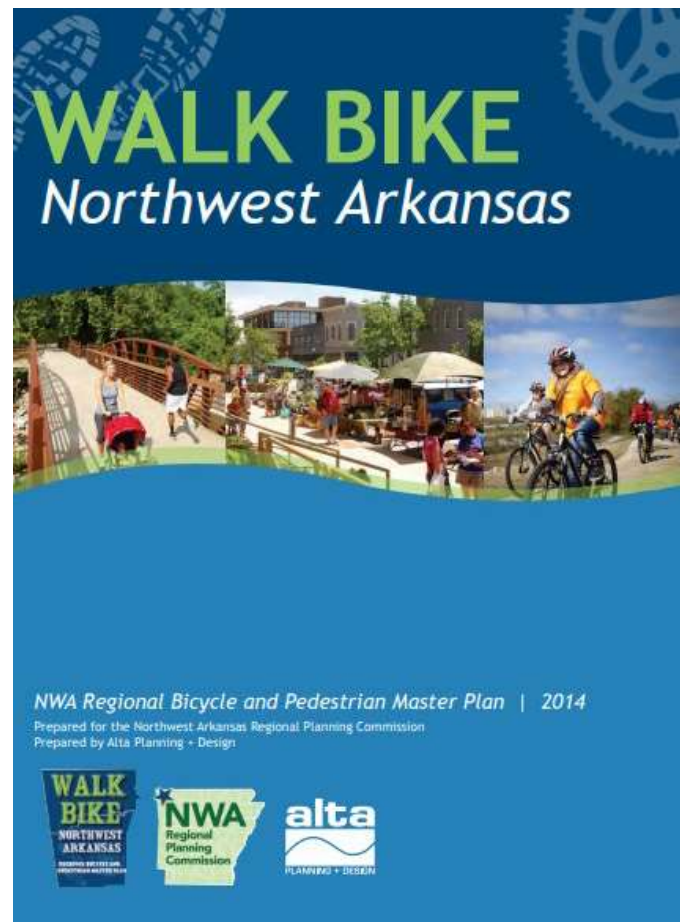
- NWA Regional Vision Zero SAP
 - Seeks to reduce the **most severe** crashes that result in death or serious injury
 - Focus on VRUs and controlling speeds through design improvements



Regional Transportation Planning

- Walk Bike Northwest Arkansas
 - Existing conditions, demand, and comfort analysis for bicycle and pedestrian travel
 - Built around the '6 Es'
 - Engineering
 - Education
 - Encouragement
 - Enforcement
 - Evaluation
 - Equity

TOOLE
DESIGN



Regional Transportation Planning

NWA Transportation Improvement Program (TIP)

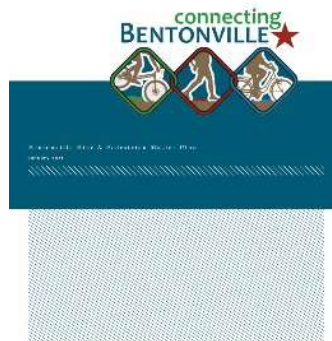
- Capital improvement plan
 - Federal and state funding
 - Matching funds
 - Regionally significant local projects
 - Updated every four years



Public Infrastructure Development Process

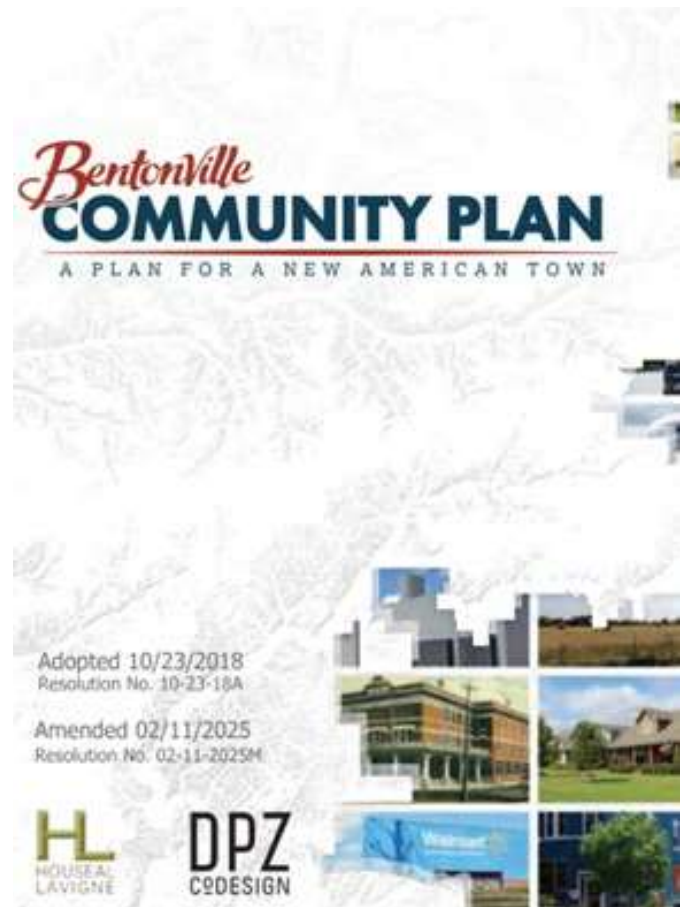
- Local Transportation Planning

- Collaborative effort across planning, parks, transportation, and other city agencies



Local Transportation Planning

- Bentonville Community Plan / Plan Bentonville
 - Future land use and strategic growth plan for the city
 - Housing, economics, open space
 - Transportation and mobility
 - Expand mobility options and improve connectivity
 - ‘Effective mobility’ at neighborhood, local, and regional scale



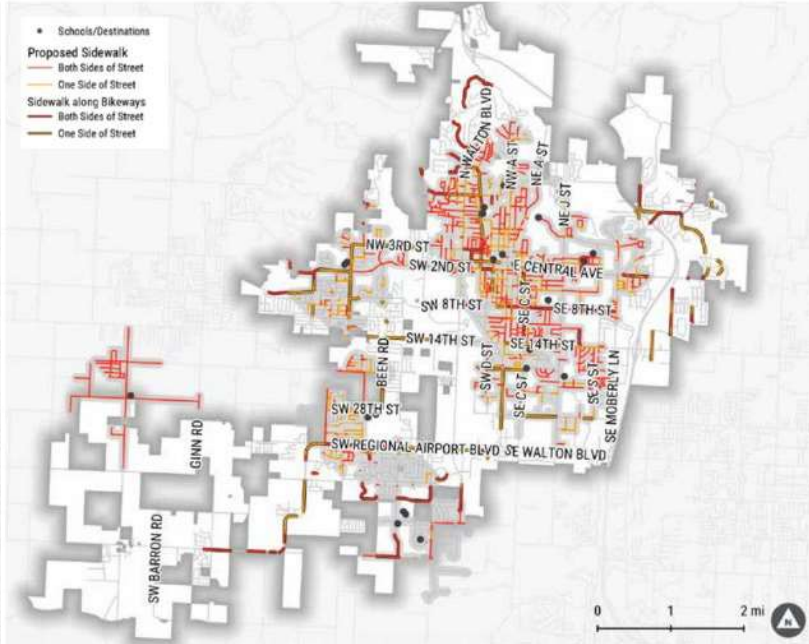
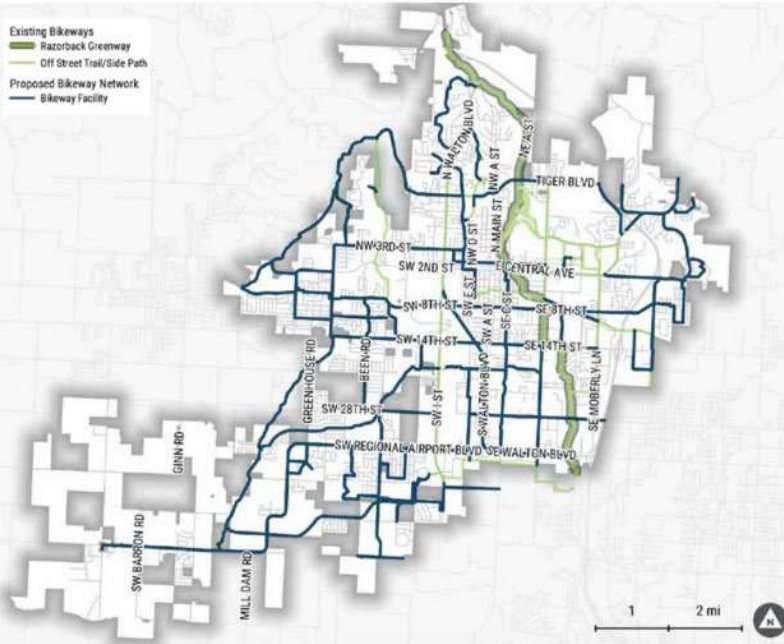
Local Transportation Planning

- Connecting Bentonville
 - Completing the network of pedestrian facilities beginning with school commute zones and infill opportunities
 - Creating an effective network of trails, primary bikeways, and neighborhood connections



Bentonville Bike & Pedestrian Master Plan
January 2021

Local Transportation Planning



Public Infrastructure Development Process

- Bentonville Development Code
 - Street layout and connectivity
 - Right-of-way requirements
 - Parking and access standards
 - Multimodal infrastructure requirements
- Future of Plan Bentonville
 - Unified Development Code
 - Form-based elements



2021
Bentonville Master Street Plan
Volume 1



Acknowledgements

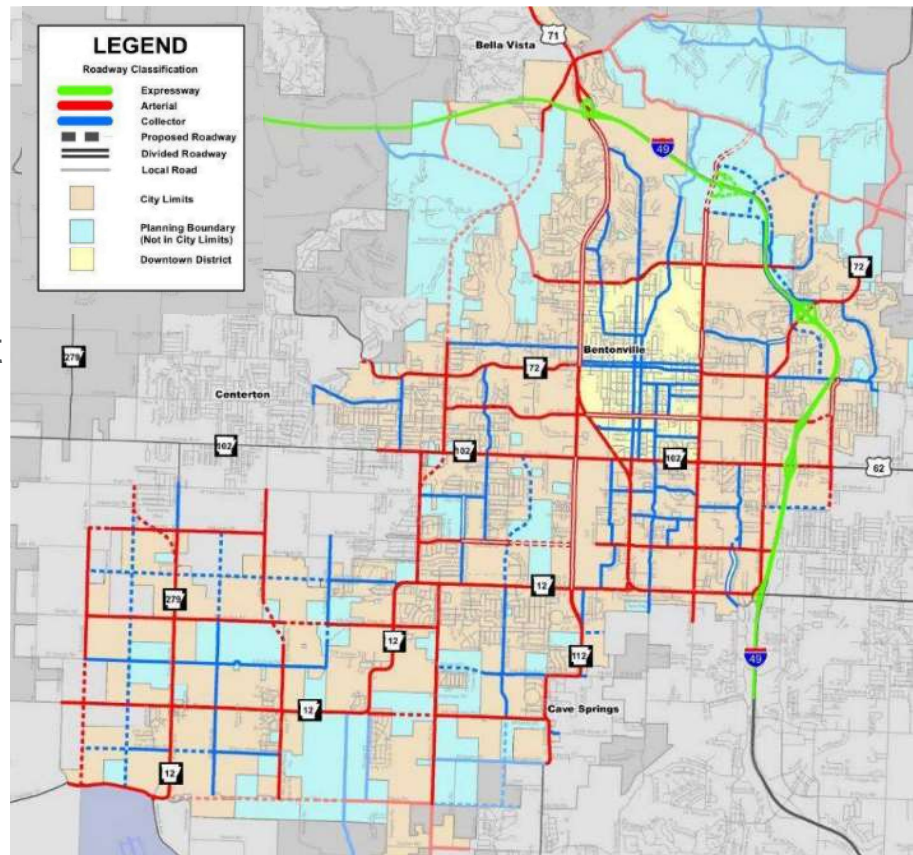
STRENGTH COMMITTEE	CITY OF BENTONVILLE	CITY COUNCIL	PLANNING COMMISSION	PREPARED BY
James Blum City Engineer	Steve DeChaine City Engineer	Tom Edwards, Ward 1 Councilor	Shane Keel	Garner
City of Bentonville Community Development Director	Dennis Blum Community Development Director	Deann Agnew, Ward 2 Councilor	Erin Knight	Arkness Transportation Group
Mike Lusk Community Development Director	Mike Kelly Community Development Director	Chris Adams, Ward 2 Councilor	Jim Wayne	
Doug Wright Ward 3 Representative Chairman	Dan Howell Community Development Director	Chris Wolfe, Ward 3 Councilor	Richard Brink	
Tony Haddock Arkness Transportation Group	Dana Hedges Community Development Director	Audrey Pughman, Ward 3 Councilor	Rod Sanders	
Mike Bender Ward 4 Representative Chairman	Tony Haddock Community Development Director	Bill Bruckner, Ward 3 Councilor	Bill Price	
Jeremy Pugh Ward 5 Representative Chairman	Mike Bender Community Development Director	Christina Simpson, Ward 4 Councilor	Dana Clark	
Steve Keel City Engineer	Shelby Griffin Director of Administration	Mark Peak, Ward 4 Councilor		
Brian Lee Planning Commission				
Stephen Cuddy Chairman of Commission				
Andrew Keel Arkness Transportation Group				
Arthur Allen Arkness Transportation Group				

10/18/2021
Garner Project No. 1921830

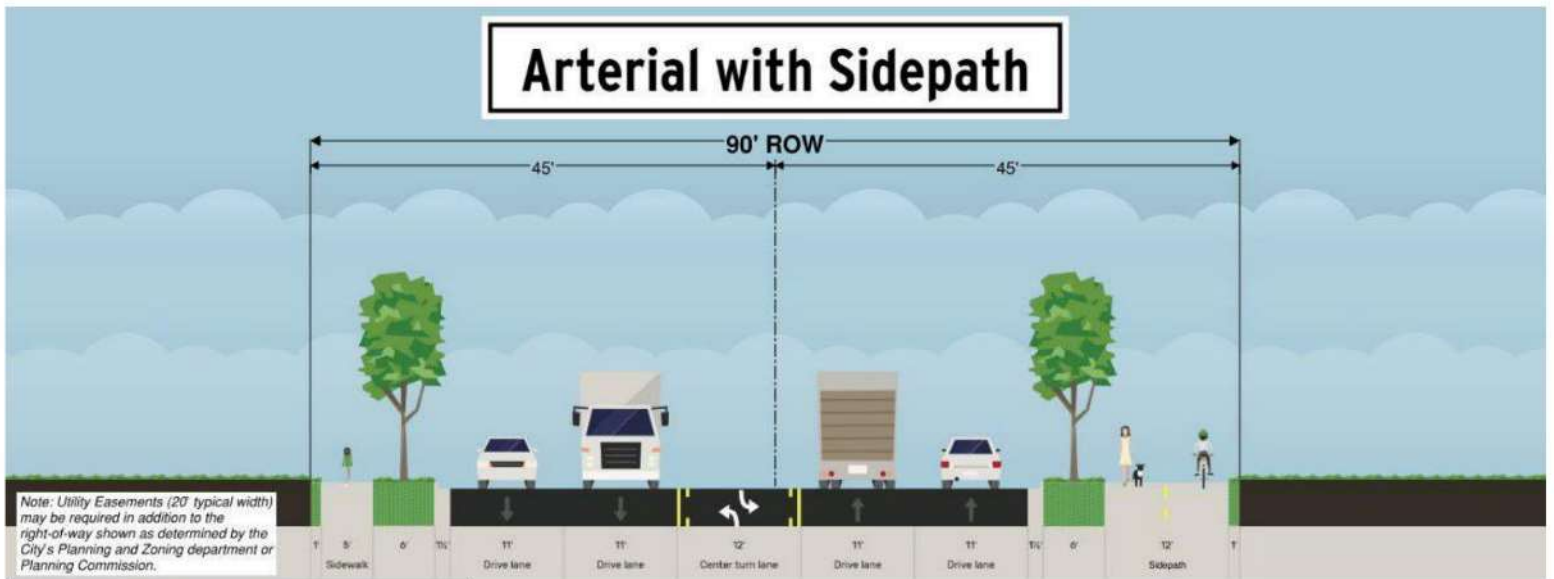


Master Street Plan

- Guides the development of Bentonville's transportation network
- Aims to reduce congestion, improve traffic flow, and support all modes of travel
- Defines a hierarchy of street types (expressways, arterials, collectors, and local streets)
- Outlines typical street sections, right-of-way requirements, and design standards



Master Street Plan



Typical Street Section 2-Arterial with Sidepath

Public Infrastructure Development Process

- Programming and Funding
 - State Transportation Improvement Program (STIP)
 - NWA Transportation Improvement Program (TIP)
 - Capital Improvement Plan
 - Maintenance schedules
 - Private development projects
- Funding Sources
 - Municipal bonds
 - General fund
 - Impact fees
 - Federal grants
 - State grants
 - Financing mechanisms
 - Philanthropic investments

Stages of Planning, Design, and Construction

Stages of Planning, Design, and Construction

- Concept Plan
- Environmental Reviews
- Engineering Design Stages
 - 30% - 60% - 90%
 - Final Design
- Construction and Inspection
- Evaluation and Maintenance



Stages of Planning, Design, and Construction

- **Concept Plan and Preliminary Engineering**
 - Preliminary layout and feasibility
 - Considers multimodal transportation impacts and future needs
 - Estimating probable cost, timeline, and resources needed
 - Where the values of the project are established



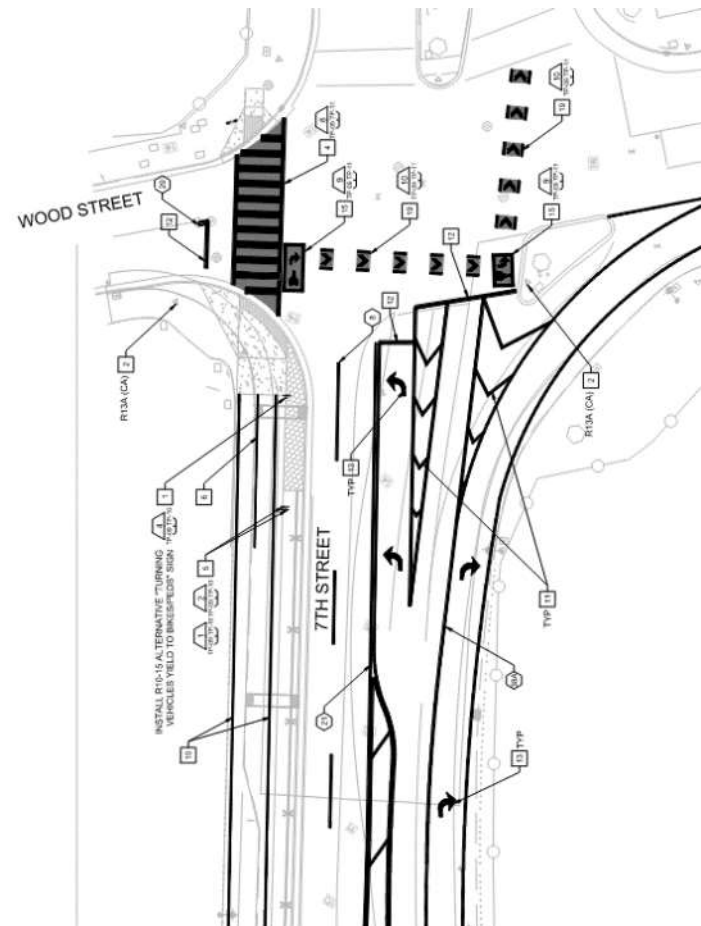
Stages of Planning, Design, and Construction

- Environmental Reviews
 - National Environmental Policy Act (NEPA) compliance
 - Land, water, wildlife, air quality, historic and archaeological sites
 - Public involvement and agency coordination
 - Mitigation strategies and regulatory approvals
 - Local and state processes



Stages of Planning, Design, and Construction

- 30% Design Phase
 - Utility mapping and initial coordination
 - Geotechnical and geological survey
 - Preliminary right-of-way determination
 - Concept refinement and early cost estimation



Stages of Planning, Design, and Construction

- 60% Design Phase
 - Utility relocation and final coordination
 - Expanded geological survey and foundation design
 - Stormwater and environmental compliance updates
 - Construction phasing and scheduling



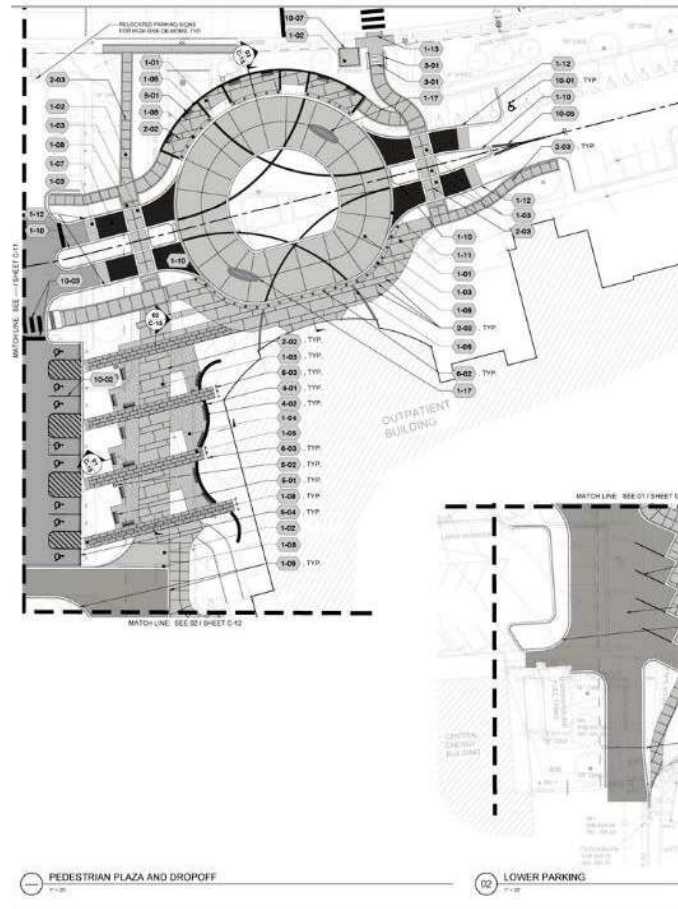
Stages of Planning, Design, and Construction

- 90% Design Phase
 - Final utility adjustments and coordination
 - Detailed geotechnical and structural verification
 - Permit approvals and environmental compliance checks
 - Construction plan refinements and cost validation



Stages of Planning, Design, and Construction

- Final Design Phase
 - Ready for construction implementation
 - Sealed and approved construction documents
 - Bid process and contractor selection
 - Pre-construction meetings and scheduling
 - Construction kickoff and oversight planning



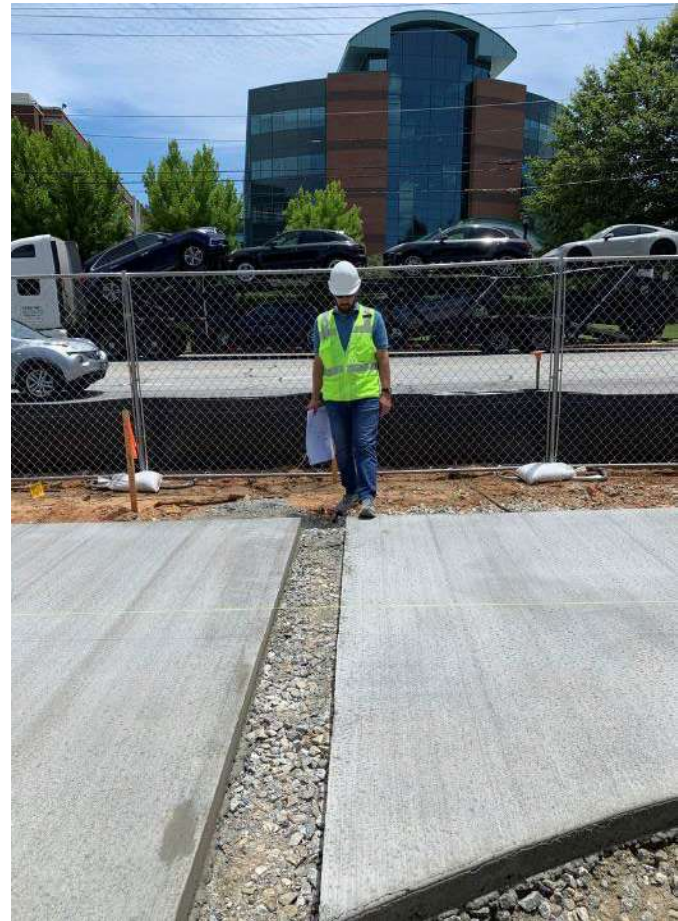
Stages of Planning, Design, and Construction

- Construction Phase
 - Implementation and execution
 - Site preparation and utility work
 - Foundation and structural development
 - Pavement, sidewalks, and safety features installation
 - Environmental mitigation measures



Stages of Planning, Design, and Construction

- Inspection Phase
 - Material and workmanship verification
 - Safety and accessibility compliance checks
 - Structural integrity testing
 - Final walkthrough and project acceptance



Stages of Planning, Design, and Construction

- Project Evaluation Phase
 - Performance and safety assessment
 - Environmental impact review
 - Cost and budget analysis
 - Long-term operations, maintenance, and improvement planning



Role of Successful Active Transportation Advisory Boards

Successful Active Transportation Advisory Boards

- **Bicycle and Pedestrian Advisory Committee**
 - Advises the city's decision-making body on bicycle and pedestrian planning and policy decisions
 - Combination of community members and city staff
 - Part of government structure
- **Bicycle Advocacy Group**
 - Advocates for improved bicycling conditions
 - Community members
 - Non-profit organization or grassroots coalition

Successful Active Transportation Advisory Boards

- **Bicycle and Pedestrian Advisory Committee**
 - Advises the city's decision-making body on bicycle and pedestrian planning and policy decisions
 - Combination of community members and city staff
 - Part of government structure
- **Bicycle Advocacy Group**
 - Advocates for improved bicycling conditions
 - Community members
 - Non-profit organization or grassroots coalition

Successful Active Transportation Advisory Boards

- Fayetteville Active Transportation Advisory Committee
 - Make recommendations to Transportation Committee
 - Review Annual Trails Plan and Sidewalk Plan
 - Review Non-Motorist Crashes
 - One field trip per year



Successful Active Transportation
Advisory Boards

- Springdale Active Transportation Committee
 - Make recommendations to City Council, Mayor, Departments
 - Reviews Plans, CIP, Bicycle Program activities, signage
 - Promotes connectivity



Successful Active Transportation Advisory Boards

- **Portland, OR – Bicycle Advisory Committee**
 - Advises the Portland Bureau of Transportation and City Council, reviewing projects and policies to enhance cycling infrastructure.
 - A volunteer committee, appointed to represent diverse perspectives on cycling issues.
 - Played a key role in advancing Portland's 2030 Bicycle Plan, influencing bike lane expansions and multimodal transportation improvements



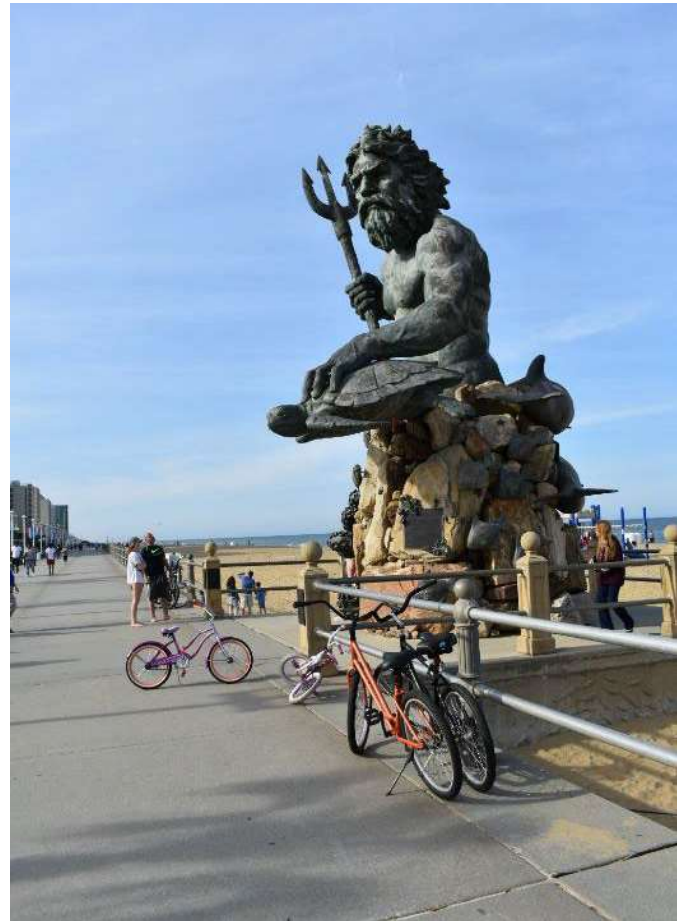
Successful Active Transportation
Advisory Boards

- San Luis Obispo, CA – Active Transportation Committee
 - Advises on infrastructure, policy, and community engagement
 - Members are selected based on interest and experience in active transportation
 - Supported multimodal planning, expansion of bike lanes and pedestrian infrastructure, and public education campaigns on safe walking and biking.



Successful Active Transportation
Advisory Boards

- Virginia Beach – Active Transportation Advisory Committee
 - Advised City Council on implementing the Active Transportation Plan and facilities for walking, biking, etc.
 - Provides a forum for public input on broader non-motorized travel
 - Promoted inclusive definitions of active transportation, including wheelchair and small-wheeled transport



Successful Active Transportation Advisory Boards

■ Committee Roles

- Project and program prioritization, review, and guidance
- Alignment of plans, policies, and standards
- Community engagement
- Regional coordination
- Member advocacy



Public Infrastructure Development Process

■ Types of Projects

- Bicycle infrastructure
- Pedestrian infrastructure
- Shared use infrastructure
- Intersection improvements
- End of trip facilities
- Maintenance and modifications
- Transit upgrades
- Access and demand management

■ Types of Programs

- Plan updates
- Data collection and analysis
- Education and outreach
- Safety activities
- Engagement and encouragement
- Public at
- Safe Routes to School

Public Infrastructure Development Process

- Key Funding Programs
 - Local funding – general, bond, streets, etc.
 - Federal Highway Administration (FHWA)
 - State and regional formula allocations
 - Surface Transportation Block Grant (STBG)
 - Transportation Alternatives Program (TAP)
 - Carbon Reduction Program (CRP)
 - USDOT Safe Streets and Roads for All (SS4A)

Successful Active Transportation Advisory Boards

■ Performance Measures: Connecting Bentonville



Annual budget for bicycle and pedestrian infrastructure



Bicycle friendly policies



Filling sidewalk gaps



Reducing bicycle and pedestrian crash rate

Successful Active Transportation Advisory Boards

- Performance Measures: Regional Complete Streets Guide
 - Fatal and serious injury crashes with vulnerable road users
 - Number of accessible curb ramps
 - Number of pedestrian countdown signals
 - Miles of routes accessible for people with disabilities
 - Sidewalk condition ratings
 - Travel time by mode in key corridors (point A to point B)
 - Emergency vehicle response times
 - Number or percentage of students who walk or bicycle to school
 - Change in store rental rates

Questions?

Name
Title
E-mail



City of Bentonville, AR - Production



NEXT YEAR BUDGET DETAIL REPORT

PROJECTION: 20261 2026 Budget

ACCOUNTS FOR:
Parks & Recreation

VENDOR	QUANTITY	UNIT COST	2026 Department
--------	----------	-----------	-----------------

TOTAL SALARIES AND WAGES

.00

City of Bentonville, AR - Production



NEXT YEAR BUDGET DETAIL REPORT

PROJECTION: 20261 2026 Budget

ACCOUNTS FOR:	VENDOR	QUANTITY	UNIT COST	2026 Department
Parks & Recreation				
105030 42020 - Uniform Supplies		1.00	2,200.00	57,376.00 *
OR - Recreation Staff Uniforms				2,200.00
OR - Lifeguard Uniforms		1.00	5,360.00	5,360.00
OR - Lawrence Plaza Uniforms		1.00	2,327.00	2,327.00
OR - Run Bentonville Uniforms		1.00	2,200.00	2,200.00
CC - Rec Staff Uniforms		1.00	2,200.00	2,200.00
FT - Full Time Staff Uniforms		1.00	3,000.00	3,000.00
Parks - Hats		1.00	1,500.00	1,500.00
Parks - Hoodies		1.00	2,700.00	2,700.00
Parks - Maintenance Uniforms		1.00	29,814.00	29,814.00
Parks - Rain Suits		1.00	1,700.00	1,700.00
Parks - Temp Shirts		1.00	600.00	600.00
Parks - Waders		1.00	275.00	275.00
Parks - Jackets		1.00	3,500.00	3,500.00
105030 42030 - Fuel Supplies		1.00	600.00	100,600.00 *
CC - Propane				600.00
Fuel		1.00	100,000.00	100,000.00
105030 42040 - Chemical Supplies		1.00	15,000.00	189,950.00 *
ARC - Pool Chemicals				15,000.00
CC - Testing Supplies		1.00	8,000.00	8,000.00
CC - Ice Melt		1.00	1,750.00	1,750.00
CC - Pool Chemicals		1.00	49,000.00	49,000.00
OR - MFAC Chemicals		1.00	30,000.00	30,000.00
OR - LP Chemicals		1.00	8,000.00	8,000.00
OR - LP Ice Paint		1.00	1,200.00	1,200.00
Parks - Restroom Weatherization		1.00	4,000.00	4,000.00
Parks - Turf Chemicals/Contract		1.00	75,000.00	75,000.00

City of Bentonville, AR - Production



NEXT YEAR BUDGET DETAIL REPORT

PROJECTION: 20261 2026 Budget

ACCOUNTS FOR:
Parks & Recreation

	VENDOR	QUANTITY	UNIT COST	2026	Department
Applications					
	Parks - Chemical Test Kits	1.00	8,000.00		8,000.00
	Parks - Creekside Chemicals	1.00	16,000.00		16,000.00
	Reduction per BPR	1.00	26,000.00		-26,000.00
105030	42050 - Janitorial Supplies CC - Body Wash	1.00	4,000.00		127,800.00 *
	CC/ARC - Fitness Wipes	1.00	15,000.00		4,000.00
	CC/ARC - Gym Towels	1.00	5,000.00		15,000.00
	CC - Janitorial Supplies	1.00	35,000.00		5,000.00
	CC - Laundry Detergent	1.00	2,700.00		35,000.00
	CC - Shower Curtains	1.00	1,700.00		2,700.00
	MFAC - Cleaning Supplies	1.00	4,000.00		1,700.00
	ARC - Cleaning Supplies	1.00	25,000.00		4,000.00
	Parks - Dog Bags	1.00	7,500.00		25,000.00
	Parks - Soap, Trsh Bgs, Cln Spls	1.00	27,000.00		7,500.00
	Parks - Gtwy & Prom - Soap, Trsh Bgs, Cln Spls	1.00	18,000.00		27,000.00
	Parks - Wyshi Wash Tablet System	1.00	2,500.00		18,000.00
	Parks - Cleanup Supplies for Volunteers	1.00	400.00		2,500.00
	Reduction per BPR	1.00	20,000.00		400.00
105030	42060 - Safety Expense CC - Fire Extinguisher Inspection	1.00	1,500.00		-20,000.00
	CC - Safety Supplies	1.00	4,000.00		16,100.00 *
	OR - MFAC Safety Supplies	1.00	1,500.00		1,500.00
	LP - Ice Rink Safety Supplies	1.00	750.00		4,000.00
	ARC - Safety Supplies	1.00	1,000.00		1,500.00
	Parks - Moberly - AED (1)	1.00	2,100.00		750.00

City of Bentonville, AR - Production



NEXT YEAR BUDGET DETAIL REPORT

PROJECTION: 20261 2026 Budget

ACCOUNTS FOR:	VENDOR	QUANTITY	UNIT COST	2026 Department
Parks & Recreation				
Parks - Bradley Eye Wash Station		1.00	1,000.00	1,000.00
Parks - Fire Exit Sign Replacements		1.00	1,000.00	1,000.00
Parks - Maintenance First Aid/Kits		1.00	1,000.00	1,000.00
Parks - Safety Fuel Cans		1.00	1,800.00	1,800.00
Parks - Vests		1.00	650.00	650.00
Parks - welding/Chainsaw safety Equipment		1.00	1,800.00	1,800.00
Parks - Fire Extinguisher		1.00	3,000.00	3,000.00
Reduction per BPR		1.00	5,000.00	-5,000.00
105030 42080 - Recreational Supplies CC - Rec Programs		1.00	57,676.00	689,355.00 *
OR - Rec Programs		1.00	636,929.00	57,676.00
ARC - Rec Programs		1.00	4,750.00	636,929.00
Reduction per BPR		1.00	10,000.00	4,750.00
105030 42090 - Other Operating Supplies BCC - Spin Bike Maintenance		1.00	5,000.00	-10,000.00
CC - Fitness Equipment Maintenance		1.00	16,400.00	25,750.00 *
Parks - Department Tools		1.00	2,500.00	5,000.00
Parks - Irrigation Instrument Repairs		1.00	1,150.00	16,400.00
Parks - Replacement Chains and saws		1.00	700.00	2,500.00
105030 42110 - Office supplies CC - ACTIVE Materials		1.00	3,500.00	1,150.00
CC - Kid Check supplies		1.00	3,500.00	700.00
CC - Office Supplies		1.00	9,000.00	26,500.00 *
CC - Timecards		1.00	1,500.00	3,500.00
ARC & Maintenance Supplies		1.00	9,000.00	9,000.00

City of Bentonville, AR - Production



NEXT YEAR BUDGET DETAIL REPORT

PROJECTION: 20261 2026 Budget

ACCOUNTS FOR:

Parks & Recreation

105030 42210 - Postage

CC - Postage

ARC - Postage

105030

42510 - Minor Equipment

OR - Soccer Goals

OR - Soccer/Tennis/Vball Nets

OR - Field No. Signs and Maps

OR - Scoreboard Controllers

OR - Pitching Mound Replacement

OR - Bat Storage

OR - Volleyball Backstop

OR- Tennis Rollers

OR - LP Rink Supplies

OR - Ice Skates

OR - Pitching Screens

OR - Batting Cage Mats

OR - Bike Racks

OR - Tent Accessories

OR - Tents

OR - Tent Weights

OR - Event Signs and Mile Markers

CC - Patron Counter

CC - Kid Center Toys and Equipment

CC - Blinds

CC - TV Replacement

CC - Community Room supplies

CC - Gymnasium Supplies

VENDOR	QUANTITY	UNIT COST	2026 Department
	1.00	2,500.00	5,000.00 *
	1.00	2,500.00	2,500.00
	1.00	2,464.00	310,824.00 *
	1.00	4,047.00	2,464.00
	1.00	4,500.00	4,047.00
	1.00	4,031.00	4,500.00
	1.00	7,665.00	4,031.00
	1.00	438.00	7,665.00
	1.00	1,643.00	438.00
	1.00	657.00	1,643.00
	1.00	3,230.00	657.00
	1.00	10,403.00	3,230.00
	1.00	8,213.00	10,403.00
	1.00	5,420.00	8,213.00
	1.00	1,400.00	5,420.00
	1.00	750.00	1,400.00
	1.00	5,000.00	750.00
	1.00	600.00	5,000.00
	1.00	6,500.00	600.00
	1.00	4,990.00	6,500.00
	1.00	4,880.00	4,990.00
	1.00	4,500.00	4,880.00
	1.00	1,250.00	4,500.00
	1.00	2,500.00	1,250.00
	1.00	9,620.00	2,500.00
	1.00		9,620.00

City of Bentonville, AR - Production



NEXT YEAR BUDGET DETAIL REPORT

PROJECTION: 20261 2026 Budget

ACCOUNTS FOR:
Parks & Recreation

	VENDOR	QUANTITY	UNIT COST	2026 Department
CC - Replacement Desk Chairs		1.00	4,500.00	4,500.00
CC - Trash Can Replacements		1.00	2,500.00	2,500.00
CC - Fitness Equipment (small) Replacement		1.00	13,100.00	13,100.00
CC - Replacement Clocks		1.00	1,000.00	1,000.00
CC - Deck Chairs		1.00	6,710.00	6,710.00
CC - Play Structure Netting		1.00	2,500.00	2,500.00
CC - Aquatic Flags, Nets, Floats		1.00	614.00	614.00
MFAC - Deck Chairs & Tables		1.00	8,890.00	8,890.00
MFAC - WITBIT Replacement/Repair		1.00	5,000.00	5,000.00
MFAC - Flags and Supplies		1.00	2,534.00	2,534.00
Admin - Operations		1.00	45,000.00	45,000.00
Admin - Trails Committee		1.00	25,000.00	25,000.00
Parks - Acid Pumps - MFAC		1.00	1,000.00	1,000.00
Parks - Athletic Field Equipment		1.00	7,000.00	7,000.00
Parks - Baby Changing Stations		1.00	1,400.00	1,400.00
Parks - Back Flows		1.00	2,700.00	2,700.00
Parks - Backpack Blowers - Replacement		1.00	1,300.00	1,300.00
Parks - Backup Pump		1.00	9,500.00	9,500.00
Parks - Backup Pump Repairs		1.00	5,000.00	5,000.00
Parks - Pool Lights		1.00	4,000.00	4,000.00
Parks - Bike Fix Station		1.00	2,200.00	2,200.00
Parks - Blk Trash Rcptcls, Benches, Trsh Cans		1.00	8,000.00	8,000.00
Parks - Chlorination Pump		1.00	1,500.00	1,500.00
Parks - Desktop Scanner		1.00	400.00	400.00
Parks - Dog Stations		1.00	1,500.00	1,500.00
Parks - Drinking Fountain		1.00	10,000.00	10,000.00

City of Bentonville, AR - Production



NEXT YEAR BUDGET DETAIL REPORT

PROJECTION: 20261 2026 Budget

ACCOUNTS FOR:
Parks & Recreation

	VENDOR	QUANTITY	UNIT COST	2026	Department
Parks - Eco Counter		1.00	2,500.00	2,500.00	
Parks - Eco Counter Batteries		1.00	700.00	700.00	
Parks - Event Trashcans		1.00	1,500.00	1,500.00	
Parks - Exhaust Fans		1.00	1,000.00	1,000.00	
Parks - Facility Tools		1.00	1,000.00	1,000.00	
Parks - Forestry Specific Tools		1.00	700.00	700.00	
Parks - Groomer Tines		1.00	500.00	500.00	
Parks - Hand Dryers		1.00	1,700.00	1,700.00	
Parks - Heaters		1.00	1,600.00	1,600.00	
Parks - Horticulturist Specific Tools		1.00	1,000.00	1,000.00	
Parks - Mechanical Tools		1.00	500.00	500.00	
Parks - Power Broom for Playground Maintenance		1.00	2,100.00	2,100.00	
Parks - Rules Signs		1.00	1,500.00	1,500.00	
Parks - Snow Blower Replacement		1.00	2,100.00	2,100.00	
Parks - SUC/VAC Replacement		1.00	550.00	550.00	
Parks - Sump Pump		1.00	2,000.00	2,000.00	
Parks - Toilet Roll Dispensers		1.00	3,500.00	3,500.00	
Parks - Trail Specific Tools		1.00	500.00	500.00	
Parks - Trimmers - Replacement		1.00	1,000.00	1,000.00	
Parks - Black Table/Benches		1.00	5,000.00	5,000.00	
Parks - Hedge Trimmer for String Trimmer		1.00	825.00	825.00	
Parks - Jump Boxes for Prk Trucks		1.00	2,400.00	2,400.00	
Parks - Ladder Racks Fac Trcks (3)		1.00	2,500.00	2,500.00	
Parks - Window/Glass Clnr Tool (3)		1.00	1,600.00	1,600.00	
Parks - Truck Storage Accy		1.00	5,000.00	5,000.00	

City of Bentonville, AR - Production



NEXT YEAR BUDGET DETAIL REPORT

PROJECTION: 20261 2026 Budget

ACCOUNTS FOR:
Parks & Recreation

ACCOUNTS FOR:	VENDOR	QUANTITY	UNIT COST	2026 Department
105030 42830 - Miscellaneous Expense		1.00	3,500.00	3,500.00 *
Miscellaneous Expenses				3,500.00

TOTAL SUPPLIES & MATERIALS 1,552,755.00

City of Bentonville, AR - Production



NEXT YEAR BUDGET DETAIL REPORT

PROJECTION: 20261 2026 Budget

ACCOUNTS FOR: Parks & Recreation

ACCOUNTS FOR:	VENDOR	QUANTITY	UNIT COST	2026 Department
105030 42520 - Minor Equipment - Computers Battery Backup Cmptr Btry Bckups 12V Batteries		1.00	200.00	31,960.00 * 200.00
Door Access Security Cards / Fobs Security devices for door access control		1.00	100.00	100.00
Multifactor Authentication Device		20.00	35.00	700.00
Standard PC Replacing end of cycle Devices (2020) or older		7.00	1,700.00	11,900.00
C202044 - Kendram C202070 - Beckyp C201942 - Chrisc C201941 - Childcare C201934 - Cameron C201933 - Pool PC BCC C201719 - Digital Signage				
All-In-One PC Replacing end of cycle Devices (2020) or older		1.00	1,700.00	1,700.00
C2020999 - Kiosk				
Power PC Replacing end of cycle Devices (2020) or older		3.00	2,600.00	7,800.00
C202067 - syounger C202079 - davidw C202068 - shaunad				
iPad Standard New positions 4 x PM Workers 1 x Forester 1 x Horticulturalist		6.00	710.00	4,260.00
Standard Laptop Replacing end of cycle Devices (2020) or older		1.00	1,750.00	1,750.00
N2020116 - Parks Maintenance (Boe Milton)				
iPad Standard Replacing Aged Equipment Includes Case BCCipads iPad DMPSY14SHG6R Steve Hernandez iPad DMPSY24MHG6R BCCipads iPad DMPSX4ETHG6R James Hutchison iPad DMPSXGLBHG6R		4.00	710.00	2,840.00

City of Bentonville, AR - Production



NEXT YEAR BUDGET DETAIL REPORT

PROJECTION: 20261 2026 Budget

ACCOUNTS FOR: Parks & Recreation

	VENDOR	QUANTITY	UNIT COST	2026 Department
airs replaced with standards per creek				
105030	43310 - Technical/Data Processing	1.00	710.00	710.00
	ipad Standard			
	Replacing Old equipment			
	includes case			
	Kendra Musick iPad GCGV1WHBHLJJ			
	241,713.78 *			
	14,520.00			
	Multifactor Authentication Software	132.00	110.00	
	Security Software for secure computer			
	access per user			
	Full Time Staff			
	Committee Members			
	Remote Access VPN License	26.00	160.00	4,160.00
	Secure VPN Connection for Mobile works			
	1 per user authorized for remote access			
	Munis Time Clock Maintenance	7.00	278.25	1,947.75
	Support for Munis Executime Time clocks			
	based on 2025 charges + 5%			
	Civic Plus Premium Dept Pages	1.00	945.00	945.00
	Wireless Access Point Licensing	1.00	2,816.03	2,816.03
	City Managed Wireless System			
	Community Center (16)			
	Phillips Parks Maint (2)			
	BamboohR	135.00	100.00	13,500.00
	Human Resource Management Software 1			
	per user			
	Adobe All Plan	3.00	1,025.00	3,075.00
	renewals			
	Hanna Carter			
	Amanda Brother			
	Kelly Schmidt			
	Adobe Acrobat Pro DC	6.00	165.00	990.00
	Software subscription			
	PDF reader and editor			
	1 per subscribed user			
	Autodesk AutoCad Contract 2	2.00	3,685.00	7,370.00
	computer-aided design software			
	Subscription 1 per authorized user			
	Internet Security Software	105.00	25.00	2,625.00
	Security Software to Internet Access			
	Microsoft Office 365 GI	27.00	120.00	3,240.00

City of Bentonville, AR - Production



NEXT YEAR BUDGET DETAIL REPORT

PROJECTION: 20261 2026 Budget

ACCOUNTS FOR: Parks & Recreation	VENDOR	QUANTITY	UNIT COST	2026 Department
Microsoft Email Account - Parks and recreation advisory board (7) ATAB (10)		105.00	400.00	42,000.00
Microsoft 365_E3 Annual Subscription of Microsoft Office Software 1 per employee / user		1.00	16,000.00	16,000.00
Subscription - Brightly Maint Ess WO Sys		1.00	1,300.00	1,300.00
Subscription - REACH		1.00	700.00	700.00
Subscription - Rec - Status Me		1.00	500.00	500.00
Subscription - Typeform		1.00	350.00	350.00
Subscription - Canva		2.00	.00	.00
Domain Name Registration playbentonville.info playbentonville.com		1.00	8,500.00	8,500.00
App - Family Works App CC		1.00	3,650.00	3,650.00
App - Perry Weather		1.00	5,000.00	5,000.00
Fee - CC - Fitness Equipment Technology		1.00	13,900.00	13,900.00
Fee - ECO Data Counter Data Trans		1.00	1,000.00	1,000.00
Fee - Kid Center Check		1.00	1,600.00	1,600.00
Fee - Musco Rem Equip Ctr] Fee MemPrk		1.00	1,800.00	1,800.00
Fee - Music - CloudCover CC		1.00	300.00	300.00
Fee - OR - Quick Scores		1.00	3,600.00	3,600.00
Software - Active Net API for Family Works		1.00	4,200.00	4,200.00
Software - PlanIT Geo Tree Management		1.00	1,200.00	1,200.00
Software - When2work Software		1.00	150.00	150.00
Streaming - Disney Plus		105.00	40.00	4,200.00
Antivirus software Software subscription for computer antivirus 1 per user				

City of Bentonville, AR - Production



NEXT YEAR BUDGET DETAIL REPORT

PROJECTION: 20261 2026 Budget

ACCOUNTS FOR:
Parks & Recreation

	VENDOR	QUANTITY	UNIT COST	2026 Department
KnowBe4 Cybersecurity & HR Training Software Phishing Management Software 3 Year Subscription Per User		105.00	70.00	7,350.00
Video Camera License Upgrade DAC / LP (8) - keep for ARC BCC (28) PM/MF (6) - keep for new PM PPK (8)		50.00	40.00	2,000.00
Fee - Music - ARC		1.00	1,975.00	1,975.00
Flock Cameras		1.00	64,000.00	64,000.00
BMI Music Copyright		1.00	350.00	350.00
ASCAP Music Copyright		1.00	900.00	900.00

TOTAL TECHNOLOGY 273,673.78

City of Bentonville, AR - Production



NEXT YEAR BUDGET DETAIL REPORT

PROJECTION: 20261 2026 Budget

ACCOUNTS FOR:
Parks & Recreation

	VENDOR	QUANTITY	UNIT COST	2026 Department
105030 43110 - Temporary Staffing Maintenance Temp Labor		1.00	195,000.00	195,000.00 *
105030 43210 - Legal & Professional Services DBI - Annual Agreement		1.00	50,000.00	1,696,950.00 *
Marketing Services		1.00	26,000.00	50,000.00
OR - Event Photography/services		1.00	55,750.00	26,000.00
OR - Coach Training		1.00	11,500.00	55,750.00
CC - Elevator Contract		1.00	5,200.00	11,500.00
Parks - Mowing/Landscape		1.00	200,000.00	5,200.00
Parks - Mowing/Landscape Creekside		1.00	90,000.00	200,000.00
Parks - Irrigation Services		1.00	18,000.00	90,000.00
Parks - Chemical/Fertilizer Application		1.00	35,000.00	18,000.00
Parks - Horticulture Landscape Contracts		1.00	28,000.00	35,000.00
Parks - BCC HVAC Contract		1.00	55,000.00	28,000.00
Parks - Tree Maintenance Services		1.00	21,000.00	55,000.00
Parks - CPSI 3rd Party Inspection		1.00	6,000.00	21,000.00
Lake Bentonville Vegetation Removal		1.00	7,000.00	6,000.00
Custodial Services		1.00	540,000.00	7,000.00
Parks - Playground Turf PM Program		1.00	25,000.00	540,000.00
Admin - Plats/Surveys		1.00	15,000.00	25,000.00
ARC - Elevator Contract		1.00	5,000.00	15,000.00
ARC - HVAC Contract		1.00	25,000.00	5,000.00
Parks- Bogle Park Landscape Improvements		1.00	8,500.00	25,000.00
Parks - Mowing/Landscape Services - Gateway		1.00	160,000.00	8,500.00
2025 Federal Grant Audit Cost		1.00	10,000.00	160,000.00
				10,000.00

City of Bentonville, AR - Production



NEXT YEAR BUDGET DETAIL REPORT

PROJECTION: 20261 2026 Budget

ACCOUNTS FOR:	VENDOR	QUANTITY	UNIT COST	2026 Department
Parks & Recreation	Master Plan		300,000.00	300,000.00
105030 43410 - Professional Services / other CC - Rec Programs		1.00	739,069.00	1,450,241.00 *
OR - Rec Programs		1.00	612,772.00	739,069.00
ARC - Rec Programs		1.00	98,400.00	612,772.00
105030 43510 - Promotional Activities Admin - Operations		1.00	7,500.00	98,400.00
Marketing Promotional Items		1.00	53,500.00	88,700.00 *
OR - Community Events		1.00	27,700.00	7,500.00
				53,500.00
				27,700.00
TOTAL PROFESSIONAL SERVICE				3,430,891.00

City of Bentonville, AR - Production



NEXT YEAR BUDGET DETAIL REPORT

PROJECTION: 20261 2026 Budget

ACCOUNTS FOR:	VENDOR	QUANTITY	UNIT COST	2026	Department
105030 Parks & Recreation					19,500.00 *
44410 - Computer Repair		1.00	12,000.00		12,000.00
ADMIN - CC Copier Maint/Toner					
ADMIN - ARC/Maint Copier Maint/Toner		1.00	7,500.00		7,500.00
105030 44420 - Vehicle Repairs & Maintenance					40,000.00 *
Parks - Vehicle Repair		1.00	40,000.00		40,000.00
105030 44430 - Building/Ground Maintenance					395,050.00 *
CC - HVAC Filters		1.00	10,000.00		10,000.00
CC - Gym Floor Repairs		1.00	5,000.00		5,000.00
CC - Paint Building - 2 yr rotation		1.00	13,000.00		13,000.00
CC - Pest Control		1.00	3,500.00		3,500.00
CC - Roof Repairs		1.00	3,500.00		3,500.00
CC - Pool Maintenance - Shut Down		1.00	8,000.00		8,000.00
CC - Rug Service/Linen		1.00	15,400.00		15,400.00
CC - Window Cleaning		1.00	4,000.00		4,000.00
Parks - Signage Miscellaneous		1.00	2,000.00		2,000.00
Parks - On Call System		1.00	6,200.00		6,200.00
Parks - Plumbing Services		1.00	7,000.00		7,000.00
Parks - Roof Repairs		1.00	6,500.00		6,500.00
Parks - Termite and Pest Control		1.00	6,200.00		6,200.00
Parks - Trash Cans		1.00	7,500.00		7,500.00
Parks - MFAC Startup		1.00	15,000.00		15,000.00
Parks - BCC Pump Maintenance		1.00	15,000.00		15,000.00
CC - Basketball PM Services		1.00	3,500.00		3,500.00
CC - Truncated Dome Replacement		1.00	10,000.00		10,000.00
CC - Pool Filters Neptune x2		1.00	27,000.00		27,000.00
Parks - Athletic Field Lights		1.00	5,000.00		5,000.00
Parks - Building Repairs		1.00	7,500.00		7,500.00

City of Bentonville, AR - Production



NEXT YEAR BUDGET DETAIL REPORT

PROJECTION: 2026I 2026 Budget

ACCOUNTS FOR: Parks & Recreation	VENDOR	QUANTITY	UNIT COST	2026 Department
Parks - Christmas Lights		1.00	25,000.00	25,000.00
Parks - Trail Closure Signage/Barricades TIII		1.00	3,000.00	3,000.00
Parks - Doors Replacement		1.00	10,500.00	10,500.00
Parks - Operations		1.00	45,000.00	45,000.00
CC - Boiler Maintenance		1.00	7,500.00	7,500.00
CC - Elevator Maintenance		1.00	3,000.00	3,000.00
CC - Floor Maintenance		1.00	5,000.00	5,000.00
CC - Building & Grounds General		1.00	10,000.00	10,000.00
CC - Gym Floor Maintenance Water Base		1.00	5,700.00	5,700.00
Parks - Electric Services		1.00	15,000.00	15,000.00
Parks - Faucet Replacement		1.00	6,000.00	6,000.00
Parks - LED Installation		1.00	5,000.00	5,000.00
Parks - LP Startup		1.00	7,500.00	7,500.00
Parks - Dugout and Press Box Repairs		1.00	5,000.00	5,000.00
ARC - Dunk Fire		1.00	900.00	900.00
ARC - Security Alarm Monitoring		1.00	900.00	900.00
BCC - Dunk Fire		1.00	750.00	750.00
BCC - Security Alarm Monitoring		1.00	1,000.00	1,000.00
Creekside - Dunk Fire		1.00	700.00	700.00
Creekside - Security Alarm Monitoring		1.00	550.00	550.00
Maintenance - Dunk Fire		1.00	750.00	750.00
Maintenance - Security Alarm Monitoring		1.00	1,500.00	1,500.00
Phillips - Dunk Fire		1.00	750.00	750.00
Phillips - Security Alarm Monitoring		1.00	750.00	750.00
ARC - Basketball PM		1.00	2,000.00	2,000.00
ARC - Pest Control		1.00	3,500.00	3,500.00

City of Bentonville, AR - Production



NEXT YEAR BUDGET DETAIL REPORT

PROJECTION: 20261 2026 Budget

ACCOUNTS FOR:	VENDOR	QUANTITY	UNIT COST	2026 Department
Parks & Recreation			2,000.00	2,000.00
ARC - Window Cleaning		1.00	2,000.00	
Parks - Memorial Park Light Pole Repair		1.00	8,000.00	8,000.00
Parks - Dates for Closing Tunnels		1.00	16,000.00	16,000.00
CC - Flooring Rplc (A&C & Admin)		1.00	10,000.00	10,000.00
BCC Clean Exterior Building		1.00	11,000.00	11,000.00
105030 44440 - Machine/Equipment Maintenance		1.00	45,000.00	45,000.00 *
Parks - Heavy Machine Maintenance		1.00	45,000.00	45,000.00
105030 44450 - Pub Works by Proj Maint		1.00	35,000.00	311,100.00 *
Operations		1.00	35,000.00	35,000.00
Bark Park Re-Sod		1.00	18,500.00	18,500.00
Chalk MVP/Quick-Dry		1.00	12,500.00	12,500.00
Chemical Applicator Renewals License		1.00	1,200.00	1,200.00
Decomposed Granite		1.00	3,000.00	3,000.00
Engineered Wood Fiber		1.00	7,200.00	7,200.00
Event Boxes		1.00	1,500.00	1,500.00
Flags		1.00	3,300.00	3,300.00
Infield Mix		1.00	2,000.00	2,000.00
Irrigation & Back Flow Supplies		1.00	16,500.00	16,500.00
Landscape Material - Bogle/Creekside		1.00	19,000.00	19,000.00
Landscape Materials - Downtown Core		1.00	54,000.00	54,000.00
Landscape Materials - Orchards/Memorial		1.00	45,000.00	45,000.00
Landscape Materials - Gateway		1.00	20,000.00	20,000.00
Native Boulders		1.00	3,500.00	3,500.00
New & Replacement Trees		1.00	7,000.00	7,000.00
Orchards Dog Park Re-Sod		1.00	5,000.00	5,000.00
Playground Repairs		1.00	12,000.00	12,000.00
sand for Topdressing Fields		1.00	8,000.00	8,000.00

City of Bentonville, AR - Production



NEXT YEAR BUDGET DETAIL REPORT

PROJECTION: 20261 2026 Budget

ACCOUNTS FOR:
Parks & Recreation

	VENDOR	QUANTITY	UNIT COST	2026 Department
sand for volleyball Courts		1.00	2,400.00	2,400.00
Seed-Overseed Memorial Soccer		1.00	35,000.00	35,000.00
Sod/Sprigs and Seed		1.00	18,000.00	18,000.00
SP Lumber		1.00	1,500.00	1,500.00
DT Square - Sod Repairs		1.00	5,000.00	5,000.00
Reduction per BPR		1.00	25,000.00	-25,000.00
105030 44520 - Lease / Equipment & Vehicle OR - Community Events		1.00	3,650.00	87,950.00 * 3,650.00
OR - Run Bentonville Half Marathon		1.00	5,000.00	5,000.00
OR - Run Bentonville Race Series		1.00	4,560.00	4,560.00
OR - Square to Square		1.00	2,000.00	2,000.00
OR - Storage Units		1.00	2,500.00	2,500.00
Parks - Portable Toilets for Parks		1.00	15,000.00	15,000.00
Parks - Toilet Serv BVL and SP		1.00	18,250.00	18,250.00
Parks - Rental Equipment		1.00	45,000.00	45,000.00
Parks - Storage Unit		1.00	7,000.00	7,000.00
Reduction per BPR		1.00	15,010.00	-15,010.00

TOTAL PROPERTY SERVICES 1,069,200.00

City of Bentonville, AR - Production



NEXT YEAR BUDGET DETAIL REPORT

PROJECTION: 20261 2026 Budget

ACCOUNTS FOR: Parks & Recreation

ACCOUNTS FOR:	VENDOR	QUANTITY	UNIT COST	2026	Department
105030 45210 - Insurance 2026 Vehicle Insurance		1.00	32,000.00	247,000.00 *	32,000.00
2026 Property Insurance		1.00	215,000.00	215,000.00	
105030 45410 - Public Notification PRAB Ads		1.00	500.00	500.00 *	500.00
105030 45420 - Employment Ads Employment Ads		1.00	250.00	250.00 *	250.00
105030 45810 - Travel & Training NRPA Conference (DW,JS,CW,GH)		1.00	14,000.00	73,580.00 *	14,000.00
City Park Alliance		1.00	3,550.00	3,550.00	
Congress New Urbanism (DW)		1.00	2,500.00	2,500.00	
ASLA (WT &)		1.00	4,000.00	4,000.00	
1st Aid/CPR Certification		1.00	2,575.00	2,575.00	
ACTIVE Net Training		1.00	3,000.00	3,000.00	
Adult Recreation Conference (EK)		1.00	3,000.00	3,000.00	
Athletic Business (KM)		1.00	3,800.00	3,800.00	
Kid Center Certification Training		1.00	1,755.00	1,755.00	
LGI Certification		1.00	1,200.00	1,200.00	
AFO Facilities (AC)		1.00	700.00	700.00	
Arborist License ISA/SMG (TC)		1.00	600.00	600.00	
Athletic Field Crew Training		1.00	3,000.00	3,000.00	
BackFlow Testing School (2)		1.00	1,400.00	1,400.00	
CDL License (I)		1.00	700.00	700.00	
Chemical License (HS,EK,CW,HD,MA,SF,AH)		1.00	2,400.00	2,400.00	
Confined Space Training (4)		1.00	400.00	400.00	
CPO Course Facilities/Grounds (4)		1.00	1,600.00	1,600.00	
CPSI		1.00	1,000.00	1,000.00	

City of Bentonville, AR - Production



NEXT YEAR BUDGET DETAIL REPORT

PROJECTION: 20261 2026 Budget

ACCOUNTS FOR:
Parks & Recreation

	VENDOR	QUANTITY	UNIT COST	2026	Department
	Horticulture Training/Conference	1.00	9,500.00	9,500.00	9,500.00
	Internal Department Training	1.00	2,500.00	2,500.00	2,500.00
	Irrigation Classes (SF,AH)	1.00	500.00	500.00	500.00
	Nutrient Applicator License	1.00	250.00	250.00	250.00
	HVAC Training	1.00	2,500.00	2,500.00	2,500.00
	Water Borne Illness (WS)	1.00	200.00	200.00	200.00
	Certified Pool Inspector (WS)	1.00	650.00	650.00	650.00
	Certified Arborist Training (TC)	1.00	2,400.00	2,400.00	2,400.00
	NRPA Event Mmgt School (DS)	1.00	3,900.00	3,900.00	3,900.00
105030	45820 - Dues & Subscriptions	1.00	10,940.00	10,940.00	29,855.00 *
	Background Check - Volunteer	1.00	500.00	500.00	10,940.00
	Fee - Membership - ARPA	1.00	900.00	900.00	500.00
	Fee - Membership - NRPA	1.00	2,320.00	2,320.00	900.00
	Sanctioning - Baseball Cal Ripken/Babe Ruth	1.00	5,225.00	5,225.00	2,320.00
	Sanctioning - Red Cross	1.00	1,440.00	1,440.00	5,225.00
	Sanctioning - USSSA Soccer	1.00	2,220.00	2,220.00	1,440.00
	sanctioning - USSSA softball	1.00	750.00	750.00	2,220.00
	Subscription - Newspaper	1.00	3,000.00	3,000.00	750.00
	Background Check - Contractor	1.00	1,500.00	1,500.00	3,000.00
	sanctioning - Swim USA & Lessons	1.00	1,000.00	1,000.00	1,500.00
	Kid Center Check	1.00	60.00	60.00	1,000.00
	Amazon Business Account Allocation	1.00			60.00

City of Bentonville, AR - Production



NEXT YEAR BUDGET DETAIL REPORT

PROJECTION: 20261 2026 Budget

ACCOUNTS FOR:
Parks & Recreation

VENDOR	QUANTITY	UNIT COST	2026 Department
--------	----------	-----------	-----------------

TOTAL OTHER SERVICES

351,185.00

City of Bentonville, AR - Production



NEXT YEAR BUDGET DETAIL REPORT

PROJECTION: 20261 2026 Budget

ACCOUNTS FOR:	VENDOR	QUANTITY	UNIT COST	2026	Department
Parks & Recreation					
105030 47390 - Improv Other than Bldg / Proj Parks Maintenance FF&E		1.00	120,000.00	3,280,000.00 *	120,000.00
Bike Ped - T1 Projects		1.00	400,000.00	400,000.00	
Bike Ped wayfinding Signage		1.00	250,000.00	250,000.00	
Trail Greenway Trail Intersection Improv @ 5th St		1.00	500,000.00	500,000.00	
Trail Walton Blvd Crossings Safety Improv		1.00	100,000.00	100,000.00	
Trail Wishing Spring Erosion Repair/Rebuild		1.00	450,000.00	450,000.00	
Trail Arkansas Missouri		1.00	750,000.00	750,000.00	
Trail North Trail Concrete Panel Replacements		1.00	165,000.00	165,000.00	
Additional Capital Funding from Money Market Interest		1.00	245,000.00	245,000.00	
Memorial Park pickleball Courts (Funded by Impact Fees)		1.00	300,000.00	300,000.00	
105030 47395 - Improv Other than Bldg/Other Flock Security Cameras (BVL, Gateway, Dave Peel)		1.00	56,000.00	1,375,000.00 *	56,000.00
Orchards Park Landscape Boulder Improvements		1.00	35,000.00	35,000.00	
Orchards Park Irrigation Repair/Improvements		1.00	25,000.00	25,000.00	
Citizens Convert Brick Crosswalk to Asphalt		1.00	60,000.00	60,000.00	
Memorial Tennis Resurface Courts 9-12		1.00	65,000.00	65,000.00	
Memorial Soccer Restroom Epoxy		1.00	14,000.00	14,000.00	
Memorial Concession Bldg 2nd Fl Flooring		1.00	20,000.00	20,000.00	
Memorial Fencing Fields 1/9 and 5/6		1.00	20,000.00	20,000.00	
Memorial Soccer Regrade & Sod Improvements		1.00	150,000.00	150,000.00	

City of Bentonville, AR - Production



NEXT YEAR BUDGET DETAIL REPORT

PROJECTION: 20261 2026 Budget

ACCOUNTS FOR:
Parks & Recreation

	VENDOR	QUANTITY	UNIT COST	2026	Department
Memorial softball Lights Update 6/8		1.00	552,000.00	552,000.00	
MFAC Pool Deck Upgrade Dive Blocks		1.00	57,000.00	57,000.00	
MFAC Dive Well Cover Replacement		1.00	12,500.00	12,500.00	
MFAC Lane Line Reels		1.00	10,000.00	10,000.00	
BCC Epoxy Men's Locker Rm and Cabana		1.00	25,000.00	25,000.00	
BCC Washer and Dryer		1.00	6,000.00	6,000.00	
BCC Comp Pool UV System		1.00	50,000.00	50,000.00	
BCC Fitness Cardio Equipment		1.00	110,000.00	110,000.00	
Creekside Pickleball windscreens		1.00	18,000.00	18,000.00	
Creekside Drainage Repair (near Dog Park and Maint)		1.00	40,000.00	40,000.00	
Bogle - Pavilion Roof Replacement		1.00	17,500.00	17,500.00	
Austin Baggett - Playground Safety Imprv Artificial Turf		1.00	32,000.00	32,000.00	
105030 47410 - Machinery and Equipment		1.00	48,000.00	540,250.00 *	
Evacuator EV150 Vacuum Evacuator		1.00	60,000.00	48,000.00	
Excavator Small Mini EX		1.00	17,000.00	60,000.00	
Mower Zero Turn 60" Gateway		1.00	7,250.00	17,000.00	
Sweeper Snowex Walk Behind		1.00	7,000.00	7,250.00	
Trailer Flat Bed Gateway		1.00	7,000.00	7,000.00	
Brush Cutter Mini Ex Attachment		1.00	10,000.00	10,000.00	
Overseeder Large Pull Behind		1.00	24,000.00	24,000.00	
Turf Roller Pull Behind		1.00	13,000.00	13,000.00	
Trailer Dump Trailer Gateway		1.00	16,000.00	16,000.00	
Infield Groomer ABI Replacement		1.00	38,000.00	38,000.00	
Turf Tank Robot Painter - New		1.00	65,000.00	65,000.00	
Mower Terrain Cutter New John Deere		1.00	125,000.00	125,000.00	

City of Bentonville, AR - Production



NEXT YEAR BUDGET DETAIL REPORT

PROJECTION: 20261 2026 Budget

ACCOUNTS FOR:	VENDOR	QUANTITY	UNIT COST	2026 Department
Parks & Recreation		1.00	16,000.00	16,000.00
Snow Blower Attachment New				
Robot Mower Phillips		1.00	36,000.00	36,000.00
Robot Mower Detail Phillips		1.00	8,000.00	8,000.00
UTV Mule (2) Gateway		1.00	50,000.00	50,000.00
105030 47420 - Vehicles				
Ram 1500 Crew Cab New Sanitation		1.00	49,500.00	336,000.00 *
F250 Truck New Gateway		1.00	55,500.00	49,500.00
F350 Crew Cab Truck New Position Hort		1.00	69,000.00	55,500.00
F350 Reg Cab Dually Truck Forestry New Pstn		1.00	77,000.00	69,000.00
F350 Reg Cab Dually Truck Facilities New Pstn		1.00	85,000.00	77,000.00
105030 47520 - Computer Equipment				
Network Upgrades		1.00	24,931.86	24,931.86 *
Replacing Aged Equipment				24,931.86
SW201502				
SW201806				
SW201729				
SW201809				
TOTAL CAPITAL EXPENSES				5,556,181.86
TOTAL Parks & Recreation				12,233,886.64
TOTAL Parks & Recreation				12,233,886.64
TOTAL REVENUE				.00
TOTAL EXPENSE				12,233,886.64
GRAND TOTAL				12,233,886.64

** END OF REPORT - Generated by Tracy Acosta **

City of Bentonville, AR - Production



NEXT YEAR BUDGET DETAIL REPORT

PROJECTION: 20261 2026 Budget

ACCOUNTS FOR: Parks & Recreation VENDOR QUANTITY UNIT COST 2026 Department

Sequence	Field #	Total	Page Break
1	2	Y	Y
2	9	Y	Y
3	10	Y	Y
4	0	N	N

Report title: | City of Bentonville, AR - Production
 12/11/2025 11:51 | NEXT YEAR BUDGET DETAIL REPORT
 TracyA

| P
 | bgnyrpr

FOR PERIOD 99

PROJECTION: 20261 2026 Budget

- Report type: 3
- Include employee with benefit detail: N
- Budget level: 2
- Percentage change calculation method: 1
- Print detail lines: B
- Print first or second year of budget requests: F
- Print revenue as credit: Y
- Include cfwd in rev bud: N
- Include cfwd in actuals: N
- Print totals only: Y
- Include segment code: N
- Include report grand totals by account type: Y
- Print full GL account: N
- Double space: Y
- Suppress zero bdgt accts: Y
- Print as worksheet: N
- Print percent change or comment: C
- Print text: N
- Amounts/totals exceed 999 million dollars: N
- Print five budget levels: N
- Report view: D

Field Name	Find Criteria	Field Value
Org		105030
Object		
Project		
Account type	Expense	
Account status	Active	

Number	Name	Initial Priority	Parks Score	Planning Score	Planning/Parks Notes	Utility Score	Utility Notes	Electrical Score	Electrical Notes	Grading Score	Grading Notes	ROW Score	ROW Notes	Runway Score	Runway Notes	Total Score	Aggregate Score	Additional Notes
1	N Walton Ignite	Tier 1	1	1	- Planning has no plans for this one	1		3	- Steel poles within section	3		1		1	Runway may have soft surface trail behind property at some point	11.0	1.6	
2	NW 3rd and Park Hill I	Tier 1	1	1	- Don't have plans yet but has a future plan for work in the trails masterplan	1		2	- Future electric plan	2		1		1	Runway plans on 10ft path on W side of Elm Tree; 3rd St trail plans.	9.0	1.3	
3	NW 3rd and Park Hill II	Tier 1	2	1	- Don't have plans yet but has a future plan for work in the trails masterplan	1		2	- Future electric plan	1		2		1	Runway plans on 10ft path on W side of Elm Tree; 3rd St trail plans.	10.0	1.4	
4	NW D and Tiger	Tier 1	1	1	- No Plans in this area	2	Multiple meter conflicts. Potential for manhole and valve adjustment depending on alignment.	1		2		1		1		9.0	1.3	
5	NW Tiger and G	Tier 1	1	1	- No Plans in this area	2	Likely meter conflict at eastern end. Potential hydrant conflict, but looks like it could easily be worked around depending on ROW.	3	Several down-guys within section	2		3		3	Would like consideration long term for wider path at some point, this is bottleneck	15.0	2.1	
6	NW Tiger and Bella Vista	Tier 1	1	1	- No Plans in this area	2	Multiple meter conflicts.	2	Primary poles within section, but relocation likely	1		1		1		9.0	1.3	
7	SW 20th and D	Tier 1	3	3	- Plans from an engineer in this area	2	Manhole grade adjustment likely. Meters that are visible look to be about 10' BOC but could require some relocation	3	- Plans from an engineer in this area	2		1		1		15.0	2.1	Completed
8	SW D and 20th	Tier 1	3	3	- Plans from an engineer in this area	2	Manhole grade adjustment likely. Meters that are visible look to be about 10' BOC but could require some relocation	3	- Plans from an engineer in this area	1		1		1		14.0	2.0	Completed

Number	Name	Initial Priority	Parks Score	Planning Score	Planning/Parks Notes	Utility Score	Utility Notes	Electrical Score	Electrical Notes	Grading Score	Grading Notes	ROW Score	ROW Notes	Runway Score	Runway Notes	Total Score	Aggregate Score	Additional Notes
9	SW Elm Tree and Cabernet	Tier 1	1	1	- No Plans in this area	1		2	Primary poles and down-guy within section, but relocation likely	1		2		1		9.0	1.3	
10	NW Jefferson and F I	Tier 2	1	1	- No Plans in this area	2		3	Primary poles and down-guy within section. Little space to work with	1		2		1		11.0	1.6	
11	NW Jefferson and F II	Tier 2	1	1	-No Plans in this area	1		2		1		2		1		9.0	1.3	
12	NW Jefferson and G I	Tier 2	1	1	- No Plans in this area	2	Multiple meter conflicts	1		1		2		1		9.0	1.3	
13	NW Jefferson and G II	Tier 2	1	1	- Sidewalk was supposed to be built by developer and has not	2	Multiple meter conflicts	2		1		2		1		10.0	1.4	
14	NW Jefferson and Huffman	Tier 2	1	1	- No Plans in this area	2	Multiple meter conflicts	1		1		2		1		9.0	1.3	
15	NW Jefferson and Lefors I	Tier 2	1	1	- No Plans in this area	2	Potential for manhole adjustment on east depending on alignment.	2	Primary poles within section	1		1		1		9.0	1.3	
16	NW Jefferson and Lefors II	Tier 2	1	1	- No Plans in this area	1		1		1		2		1		8.0	1.1	
17	SW D and 2nd	Tier 2	1	1	- No Plans in this area	2	meter and valve potential relocation	1		1		1		1		8.0	1.1	
18	SW Featherston and Amberwood	Tier 2	1	1	- No Plans in this area	2	Potential for manhole adjustment depending on alignment.	2	Carrol Electric within section	2		1		1		10.0	1.4	
19	SW Gator and 112	Tier 2	1	1	- No Plans in this area	1		2	Potential path conflict	1		3		1		10.0	1.4	
20	NW 2nd and F I	Tier 3	1	1	- No Plans in this area	2		2	Primary line within section	1		1		1		9.0	1.3	Completed
21	NW 4th and A	Tier 3	1	1	- No Plans in this area	1		3	Primary poles directly in path between existing sidewalk	1		1		1		9.0	1.3	
22	NW Bella Vista and 11th	Tier 3	1	1	- No Plans in this area	2	meters 10-12' BOP. Franchise utility conflicts	1	Primary poles within section	2		2	South end property line needs to be checked.	1		10.0	1.4	
23	NW Bella Vista and 5th	Tier 3	1	1	- No Plans in this area	1	No meters evident. South of 5th there are conflicts	2	Primary poles within section	2		1		1		9.0	1.3	
24	NW Bella Vista Road and 10th	Tier 3	1	1	- No Plans in this area	1	No meters evident.	1		2		2		1		9.0	1.3	

Number	Name	Initial Priority	Parks Score	Planning Score	Planning/Parks Notes	Utility Score	Utility Notes	Electrical Score	Electrical Notes	Grading Score	Grading Notes	ROW Score	ROW Notes	Runway Score	Runway Notes	Total Score	Aggregate Score	Additional Notes
25	NW Bella Vista Road and 8th	Tier 3	1	1	- No Plans in this area	3	Hydrant relocation on North and South end likely	2	Primary poles within section	1		2		1		11.0	1.6	
26	NW Tiger and H	Tier 3	1	1	- No Plans in this area	1		3	Primary poles directly obstructing. Difficult relocation	3		3		3	Would like consideration long term for wider path at some point, this is bottleneck	15.0	2.1	
27	SE Rachel and C I	Tier 3	1	1	- No Plans in this area	1		1		1		1		1		7.0	1.0	
28	SE Rachel and C II	Tier 3	1	1	- No Plans in this area	1		1		1		1		1		7.0	1.0	
29	SE Signature and 18th	Tier 3	1	1	- No Plans in this area	2	2 manholes in route. Potential for Ranking 1 based on ex. Manhole elevations.	1		1		2		1		9.0	1.3	
30	NW 3rd and B	Tier 4	1	1	- No Plans in this area	1	No meter conflicts evident. Confirmation required.	2	Lift poles within section	1		1		1		8.0	1.1	
31	NW 3rd and C	Tier 4	1	1	- No Plans in this area	1	No meter conflicts evident. Confirmation required.	2	Lift poles within section	2		1		1		9.0	1.3	
32	NW 3rd and D	Tier 4	1	1	- No Plans in this area	1	No meter conflicts evident. Confirmation required.	2	Primary pole within section. Potential issues with alley	2		1		1		9.0	1.3	
33	NW 5th and A	Tier 4	1	2	- LSD 22-0014 Called out for this area	1	Franchise utility conflicts.	3	Down-guys and anchors directly obstructing	2		1		1		11.0	1.6	
34	NW Bella Vista Way and 6th	Tier 4	1	1	- No Plans in this area	2	few meters outside right of way	2	Primary poles within section	1		1		1		9.0	1.3	
35	NW Bella Vista Way and 7th	Tier 4	1	1	- No Plans in this area	2		2	Primary poles within section	1		2		1		10.0	1.4	
36	SE Jonathan and Winesap	Tier 4	1	1	- No Plans in this area	1	Meters are back in yard.	1		2		3		1		10.0	1.4	
37	SW 2nd and Chardonmay I	Tier 4	1	1	- No Plans in this area	1		3	Primary poles directly obstructing	3		3		1		13.0	1.9	
38	SW 2nd and Chardonmay II	Tier 4	1	1	- No Plans in this area	1		3	Primary poles directly obstructing	3		3		1		13.0	1.9	
39	SW 2nd and Elm	Tier 4	1	1	- No Plans but could be shortened based on recent development	1	portion of sidewalk was installed w/ Elm Tree townhomes	3	Primary poles directly obstructing	2		1		1		10.0	1.4	
40	NE Glenbrook and John DeShields	Tier 5	1	1	- No Plans in this area	1		3	Three phase transformer directly obstructing	3		1		1		11.0	1.6	
41	NE Martin Luther King and Memorial Park	Tier 5	1	1	- No Plans in this area	1		1		3		1		1		9.0	1.3	

Number	Name	Initial Priority	Parks Score	Planning Score	Planning/Parks Notes	Utility Score	Utility Notes	Electrical Score	Electrical Notes	Grading Score	Grading Notes	ROW Score	ROW Notes	Runway Score	Runway Notes	Total Score	Aggregate Score	Additional Notes
42	NE Martin Luther King Jr and Brave	Tier 5	1	1	- No Plans in this area	1		2	Primary poles within section	1		1		1		8.0	1.1	Completed
43	NE Martin Luther King Jr and Wildcat	Tier 5	1	1	- No Plans in this area	1		3	primary poles very close to road. Little space to work with	2		1		1		10.0	1.4	
44	NW 2nd and D	Tier 5	1	1	- No Plans in this area	1		2	Primary pole within section. Tight spacing	1		1		1		8.0	1.1	Completed
45	NW 2nd and F	Tier 5	1	1	- No Plans in this area	2		2	Primary pole within section. Tight spacing	2		1		1		10.0	1.4	
46	NW 2nd and G	Tier 5	1	1	- No Plans in this area	2		2	Primary pole within section. Tight spacing	1		1		1		9.0	1.3	
47	NW 2nd and Walton	Tier 5	1	1	- No Plans in this area	2		2	Primary pole within section. Tight spacing	2		1		1		10.0	1.4	
48	NW D and Jefferson I	Tier 5	1	1	- No Plans in this area	2		2	Primary pole within section. Relocation possible	2		2		1		11.0	1.6	
49	NW D and Jefferson II	Tier 5	1	3	- Design planned for this area	2		2	Primary pole within section. Relocation possible	2		2		1		13.0	1.9	
50	NW Elm and Apple Blossom	Tier 6	1	1	- No Plans in this area	2		1		2		2		1		10.0	1.4	
51	NW Walton and 10th	Tier 6	1	1	- No Plans in this area	1		2	Steel poles within section	2		1		1		9.0	1.3	Construction
52	NW Walton and 11th	Tier 6	1	1	- No Plans in this area	1		2	Steel poles within section	1		1		1		8.0	1.1	Completed
53	NW Walton and 7th	Tier 6	1	1	- No Plans in this area	1		2	Steel poles within section	1				1		7.0	1.0	Construction
54	NW Walton and 8th	Tier 6	1	1	- No Plans in this area	1		2	Steel poles within section	3		1		1		10.0	1.4	
55	NW Walton and Carson	Tier 6	1	1	- No Plans in this area	1		2	Steel poles within section	1		1		1		8.0	1.1	Construction
56	NW Walton and Lee Scott Drive	Tier 6	1	1	- No Plans in this area	1		2	Steel poles within section	2		1		1		9.0	1.3	
57	NW Walton and Tiger	Tier 6	1	1	- No Plans in this area	1		2	Steel poles within section	3		1		1		10.0	1.4	
58	SW Barron and 112	Tier 6	1	1	- No Plans in this area	1		1		2		1		3	Runway prefer to plan for future 10 ft shared path	10.0	1.4	
59	SW Barron and Opal	Tier 6	1	2	- Potential plans here for LSD	1		2	Primary poles within section	3		2		3	Runway prefer to plan for future 10 ft shared path	14.0	2.0	

Number	Name	Initial Priority	Parks Score	Planning Score	Planning/Parks Notes	Utility Score	Utility Notes	Electrical Score	Electrical Notes	Grading Score	Grading Notes	ROW Score	ROW Notes	Runway Score	Runway Notes	Total Score	Aggregate Score	Additional Notes
60	NW Walton and 3rd II	Tier 7	1	1	- No Plans in this area	1		2	Steel poles within section	2		1		1		9.0	1.3	
61	NW Walton and 3rd I	Tier 7	1	1	- No Plans in this area	1		2	Steel poles within section	2		1		1		9.0	1.3	

Name	Initial Priority	Updated Priority	Status	Conflicts
NW 2nd and F I	20	1	In Construction	
NW Walton and 7th	53	2	Issued Work Order	BEUD and franchise relocations
NW Walton and Carson	55	2	Issued Work Order	
NW Walton and 10th	51	2	Issued Work Order	
NW Tiger and Bella Vista	6	3	In Design	WM Conflicts
NW Walton and 3rd II	60	4	In Design	
NW Walton and 3rd I	61	4	In Design	
NW Walton and 8th	54	4	In Design	
SE Rachel and C I	27	5	Conceptual	School District Property
NW 2nd and G	46	5	In Design	
NW 2nd and F	45	5	In Design	
NW 2nd and Walton	47	5	In Design	
NW Walton and Lee Scott Drive	56	6	In Design	
NE Martin Luther King and Memorial Park	41	7	In Design	
NE Martin Luther King Jr and Wildcat	43	7	In Design	
NW Bella Vista and 5th	23	8	In Design	
NW Bella Vista Road and 10th	24	8	In Design	
NW Bella Vista Way and 6th	34	8	In Design	
NW Bella Vista and 11th	22	8	In Design	
NW Bella Vista Way and 7th	35	8	In Design	
NW Bella Vista Road and 8th	25	8	In Design	
NW Jefferson and Lefors II	16	9	In Design	ROW Dedication required
NW Jefferson and Huffman	14	9	In Design	
NW Jefferson and F I	10	9	In Design	
NW D and Jefferson I	48	9	In Design	Portions built by new residential
NW D and Jefferson II	49	9	In Design	ROW Dedication required
NW Jefferson and F II	11	10	In Design	
NW Jefferson and G I	12	10	In Design	
NW Jefferson and G II	13	10	In Design	
NW Jefferson and Lefors I	15	11	Conceptual	ROW Dedication required
NW 3rd and D	32	11	In Design	
NW 3rd and C	31	12	In Design	
NW 4th and A	21	13	In Design	
NW 3rd and B	30	14	Conceptual	Utility relocations
NW D and Tiger	4	15	Conceptual	Grade and utility conflicts
NW 5th and A	33	16	Conceptual	
NW Tiger and G	5	16	Conceptual	Dedication required. Not helpful property owner
NW Tiger and H	26	16	Conceptual	Dedication required. Not helpful property owner
NE Glenbrook and John DeShields	40	17	Conceptual	
SW Elm Tree and Cabernet	9	18	Conceptual	ROW Dedication required
NW 3rd and Park Hill I	2	19	Conceptual	
NW 3rd and Park Hill II	3	19	Conceptual	
SW 2nd and Elm	39	20	Conceptual	
NW Elm and Apple Blossom	50	21	Conceptual	
SW 2nd and Chardonnay I	37	22	Conceptual	
SW 2nd and Chardonnay II	38	22	Conceptual	
SE Jonathan and Winesap	36	23	Conceptual	
SE Signature and 18th	29	24	Conceptual	
NW Walton and Tiger	57	24	Conceptual	
N Walton Ignite	1	25	Conceptual	Significant grade issues
SW Barron and 112	58	26	Conceptual	
SW Barron and Opal	59	27	Conceptual	
SW Featherston and Amberwood	18	28	Conceptual	
SW Gator and 112	19	29	Conceptual	
SW D and 2nd	17	30	Conceptual	Massive tree removal
SE Rachel and C II	28	31	Conceptual	Section runs through school playground.
NE Martin Luther King Jr and Brave	42		Completed	
NW 2nd and D	44		Completed	
NW Walton and 11th	52		Completed	
SW D and 20th	8		Completed	
SW 20th and D	7		Completed	